

WEST PIEDMONT HEALTH DISTRICT WALKABILITY ASSESSMENT REPORT

July 2017



WPHD *West Piedmont
Health District*

 **GO Healthy**
west piedmont

 Virginia Tech
Center for Public Health
Practice and Research

TABLE OF CONTENTS

PART I: INTRODUCTION	3
1. WHY IS WALKABILITY IMPORTANT?	3
2. ABOUT THE CDC DP14-1422 GRANT	3
3. ABOUT GO HEALTHY WEST PIEDMONT	3
4. THE WEST PIEDMONT COMPLETE STREETS COALITION	4
5. THE WALKABILITY AUDIT	4
6. WALKABILITY ASSESSMENT MEETINGS	5
PART II: WALKABILITY ASSESSMENT RESULTS	6
FRANKLIN COUNTY	6
TOWN OF ROCKY MOUNT	6
VILLAGE OF FERRUM	8
WESTLAKE	9
TOWN OF BOONES MILL	11
HENRY COUNTY	12
TOWN OF BASSETT	12
TOWN OF COLLINSVILLE	14
FIELDALE	16
TOWN OF RIDGEWAY	17
CITY OF MARTINSVILLE	19
PATRICK COUNTY	22
TOWN OF STUART	22
APPENDICES	24
APPENDIX 1: WEST PIEDMONT WALKABILITY ASSESSMENT TOOL	25
APPENDIX 2: WALKABILITY ASSESSMENT SUMMARY KEY	29
APPENDIX 3: WALKABILITY ASSESSMENT SUMMARIES	32
APPENDIX 4: ADDITIONAL RESOURCES	71

PART I: INTRODUCTION

1. WHY IS WALKABILITY IMPORTANT?

The Surgeon General stated in his “Call to Action to Promote Walking and Walkable Communities” that walking is a great way to increase a community’s physical activity, social cohesion, pedestrian safety, and local economy, and to reduce air pollution.¹ With 29.2% of Virginia adults in 2015 classified as obese and only half engaging in regular aerobic activity,² it is more important than ever that exercise be prioritized in every aspect of life. Walking is a great way to achieve physical activity goals for many reasons: it does not require special equipment or skills; it is low-impact and has a low risk of injury; it can be done year-round, indoors or outdoors; and it can be multipurpose, such as for transportation or leisure. Walkable communities often have more pedestrian safety features such as designated crosswalks, and are safer for kids who walk to school. Walkable communities support social cohesion by encouraging people to walk to the store with friends, take the dog for a walk, chat with neighbors, and participate in walking groups. Walkability reduces air pollution because people are more likely to walk or bike to work, and it boosts local businesses by making them more accessible. Walkability should be a priority for city planners, local health groups, and community members alike.

2. ABOUT THE CDC DP14-1422 GRANT

The Centers for Disease Control and Prevention (CDC) awarded a grant to the Virginia Department of Health (VDH) to implement an initiative called “*State and Local Public Health Actions to Prevent Obesity, Diabetes, and Heart Disease and Stroke.*” Funds were sub-awarded to the West Piedmont Health District. The purpose of the CDC grant is to create a locally-driven collaborative approach that prevents and reduces obesity, diabetes, heart disease, high blood pressure, and stroke and to promote good health in communities disproportionately impacted by these health conditions. Both the short-term and long-term goals of this grant will be achieved through environmental initiatives, health system interventions, and the linking of community programs to clinical services.

3. ABOUT GO HEALTHY WEST PIEDMONT

Go Healthy West Piedmont (GHWP) is the result of an investment of nearly \$1.7 million by the Virginia Department of Health via the Centers for Disease Control and Prevention (CDC). This four-year grant initiative is designed to prevent obesity, diabetes, heart disease and stroke. As community residents consume more fresh, nutritious foods, engage in increased physical activity, and participate in lifestyle change programs, the expected outcome is reduced rates of obesity and diabetes. Additionally, GHWP seeks to promote medication adherence and increased use of self-monitoring techniques in order to help individuals improve blood pressure control leading to reduced death and disability rates from heart disease and stroke.

¹ U.S. Department of Health and Human Services. Step It Up! The Surgeon General’s Call to Action to Promote Walking and Walkable Communities. Washington, DC: U.S. Dept of Health and Human Services, Office of the Surgeon General; 2015.

² Centers for Disease Control and Prevention. (2017, May). Nutrition, physical activity, and obesity: Data, trends and maps. Retrieved from <https://www.cdc.gov/nccdphp/dnpao/data-trends-maps/index.html>

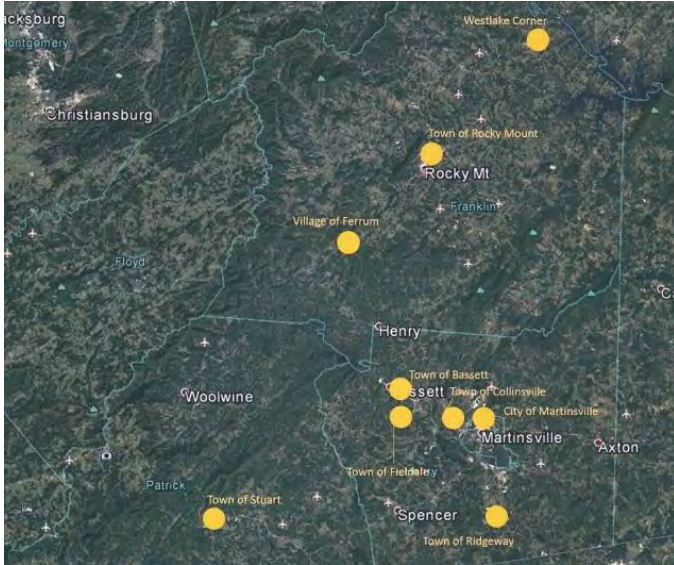
4. THE WEST PIEDMONT COMPLETE STREETS COALITION

The West Piedmont Complete Streets Coalition was formed in October of 2015 after a Complete Streets Workshop was held on August 5, 2015. Goals for the coalition included providing options to improve health and quality of life and encouraging local adoption of Complete Streets policies. In January of 2016 a walkability assessment sub-committee was formed. In March of 2016 subcommittee members met to discuss a walkability audit throughout the West Piedmont Health District.

5. THE WALKABILITY AUDIT

Walkability audits were conducted throughout Franklin County, Henry County, Patrick County, and the City of Martinsville. The coordination of the walkability assessment was planned and led collaboratively by Joe Bonanno, Regional Planner, West Piedmont Planning District Commission; Barbara Watson, Healthy Communities Coordinator, Go Healthy West Piedmont; and the Complete Streets Coalition Walkability Assessment Committee, of which jurisdiction planners Susan McCulloch, Lisa Cooper, Josh Gibson, and Patricia Foley were members. Denise Stirewalt, Wade Nester, and Smith Chaney were also committee members along with Disability Rights and Resource Center representative, Pam Cobler. The committee identified street segments to be assessed and identified issues of concern including sidewalk conditions, connectivity among destinations, accessibility and safety. Assessments to capture the status of these issues of concern were conducted among road and street segments from one intersection to the next. The Complete Streets Coalition adapted a walkability assessment tool from the University of Delaware Institute for Public Administration's "Healthy Communities: The Walkability Assessment Tool" (Appendix 1). The tool assessed the status of sidewalks, paths or trails, if they were present. Sidewalk measures included whether or not sidewalks were continuous, if they were a minimum of five feet wide, if they had curb cuts, if they were free from obstructions, if there were crosswalks or pedestrian signals present at intersections, and if the sidewalk was part of a larger pedestrian network. Additionally, safety and appeal measures included comfort crossing streets, the presence of buffers between sidewalks and streets, and deficiencies including traffic speed and barriers to walkability such as trash and poor lighting. Finally, connectivity measures documented the number and types of destinations located in the area.

Individuals conducting the walkability assessments varied from community members to jurisdiction planners. Maps were provided with highlighted street segments to assess. Each street segment was assessed individually using the adapted walkability assessment tool. Some of the individuals completing the assessments took photos to complement the walkability assessment tool. Planners from each jurisdiction gathered data from those performing the walkability assessments and submitted them to Barbara Watson. Completed assessments for each jurisdiction were given to the Virginia Tech Center for Public Health Practice and Research (CPHPR). CPHPR works with the West Piedmont Health District to evaluate local initiatives within the CDC 1422 grant. CPHPR compiled assessment findings into summary packets. Due to the qualitative nature of the data collected by the assessment tool, findings were primarily descriptive. The walkability assessment summaries (Appendix 3) drove the next step of the process, which included a meeting with the Complete Streets Coalition and individual meetings with each of the jurisdictions.



Overview Map of West Piedmont Walkability Assessment Areas

6. WALKABILITY ASSESSMENT MEETINGS

On March 30, 2017, the West Piedmont Complete Streets Coalition held a walkability assessment meeting at the West Piedmont Planning District Commission office. Coalition members Joe Bonanno, Barbara Watson, Lisa Cooper, Pam Cobler, Tyler Lee, Susan McCulloch, Wade Nester, and Sandra Puckett were in attendance. Annie Loyd and Kathy Hosig from CPHPR led the walkability assessment discussion. Annie presented an overview of the walkability assessment process and summary packets of each jurisdiction. Coalition members focused on their jurisdiction and had time to review the walkability assessment results and ask questions. The group discussed that each jurisdiction is unique, and there is no one-size-fits-all approach. The Virginia Tech team was able to schedule individual meetings with many of the jurisdictions to discuss next steps using assessment summaries, maps, and photos. The goal of individual meetings was to allow participation by diverse stakeholders and community members in order to identify the best way to use results of the walkability assessments and identify feasible strategies to enhance walkability.

From May to July 2017, Barbara Watson and Joe Bonanno from West Piedmont and Annie Loyd and Kathy Hosig from Virginia Tech met with jurisdictions to discuss the walkability assessment findings. Maps of each street segment were used in order to discuss findings and better understand the areas assessed. A worksheet enabled the identification and prioritization of areas of concern and priority segments. Discussion among meeting attendees included ideas for improvements and changes that could be made to address areas of concern. Next steps varied by jurisdiction.

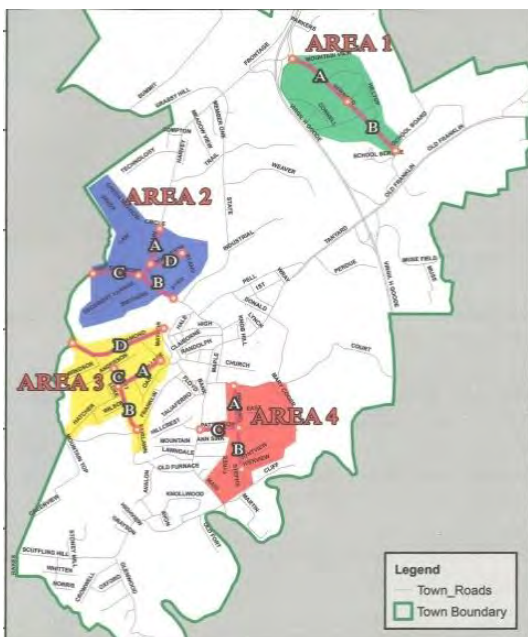
PART II: WALKABILITY ASSESSMENT RESULTS

FRANKLIN COUNTY

TOWN OF ROCKY MOUNT

The walkability audit of the town of Rocky Mount took place in October and November of 2016. A total of 18 street segments were assessed. Eleven out of eighteen street segments had sidewalks, paths or trails. The Rocky Mount assessments were grouped into five areas.

A meeting was held in Rocky Mount on May 24, 2017 to discuss walkability assessment results, prioritize areas of concern, and discuss next steps.



Rocky Mount Walkability Assessment Overview

Rocky Mount Walkability Assessment Street Segment Summary

Area 1 - Bernard Drive: Cornell Rd to Vantage Dr, Bernard Drive: Vantage Dr to School Board Rd

Both segments in Area 1 are without sidewalks, paths or trails. Safety is the greatest concern. Meeting attendees stressed that these two segments are not safely walkable. It was noted that issues with storm drains and flooding are present and these issues need to be addressed before sidewalk funding can be accomplished.

Area 2 - North Main St: Circle Dr (N intersection) to Pendleton St, North Main St: Pendleton St to Byrd Ln, Pendleton St: Bland St to N Main St, Sycamore St: Rocky Mount Town Boundary to N Main St

The two North Main segments have sidewalks on both sides and are pleasant streets to walk. The remaining two segments do not have sidewalks. The idea of possibly connecting the YMCA's walking loop trail to Windy Lane was presented. It was noted that this proposition would need to come from

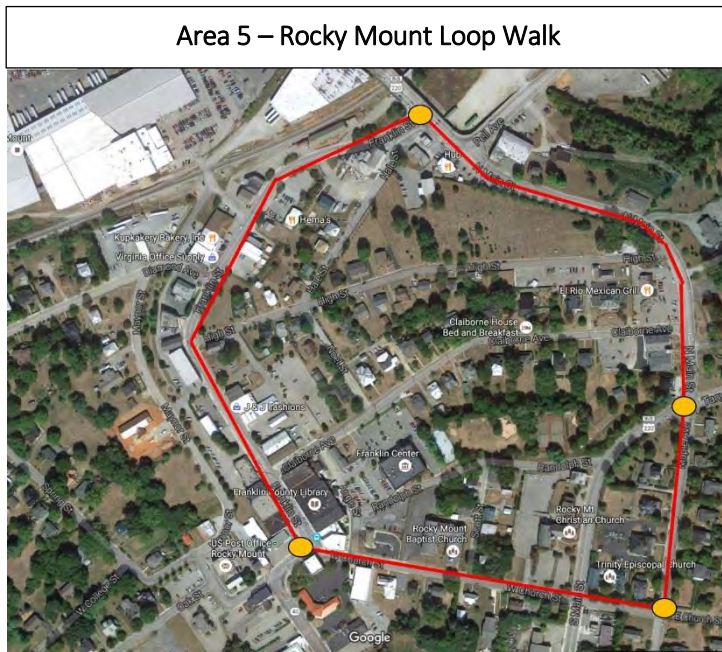
the YMCA. Additional segments in this area that may benefit from walkability assessments include Windy Lane to Main St, Circle Drive, and Green Meadow.

Area 3 - Dent St: Anderson St to West College St, Dent St: West College St to Franklin St-Rt 40, Diamond Ave: Rocky Mount Town Limit to Franklin St-Rt 40, West College St: Dent St to Spring St, Franklin St: Floyd St to Dent St

The main segment of concern in this area is the Dent Street: West College St to Franklin St segment. A sidewalk is needed, as this area has heavy pedestrian traffic and connects to a CVS and a park. It was noted that sidewalk grinding will take place this summer across Area 3 to meet ADA standards.

Area 4 - Orchard Rd: East Court St to Patterson Ave, Orchard Rd: Patterson Ave to Riverview Ave, Patterson Ave: Orchard Rd to South Main St

Sidewalks are present on one or both sides of the two Orchard Rd street segments. There are no sidewalks on the Patterson Ave segment. However, the walkability assessment noted the street is wide enough for a sidewalk. It was noted that a crosswalk will be placed from Maple to North Main this summer. Potential changes to improve walkability in Area 4 include crosswalks at Main and Tanyard and Floyd to the hospital parking lot. Further assessments were suggested for East Court and Donald Ave.



Area 5 (Rocky Mount Loop Walk) - Maple Ave: N Main St (220 Bus) to East Church St, Franklin St (Rt 40): W Church St/Farmers Market to N Main St (220 Bus), Church St: Maple Ave to Franklin St (Rt 40/Farmers Market), North Main St (220 Bus): Franklin St (Rt 40) to Maple Ave

All of the four street segments in Area 5 have sidewalks on one or both sides of the street. Overall, this area is very walkable and used regularly by pedestrians. It was noted that sidewalk grinding

recently took place in this area. A crosswalk landing will be established in Maple/Tanyard and N Main St/Maple Ave.

Additional Notes

Joe Bonnano shared that he has a sidewalk inventory of Rocky Mount. It was also noted that ADA changes have been made since the walkability assessment was conducted.

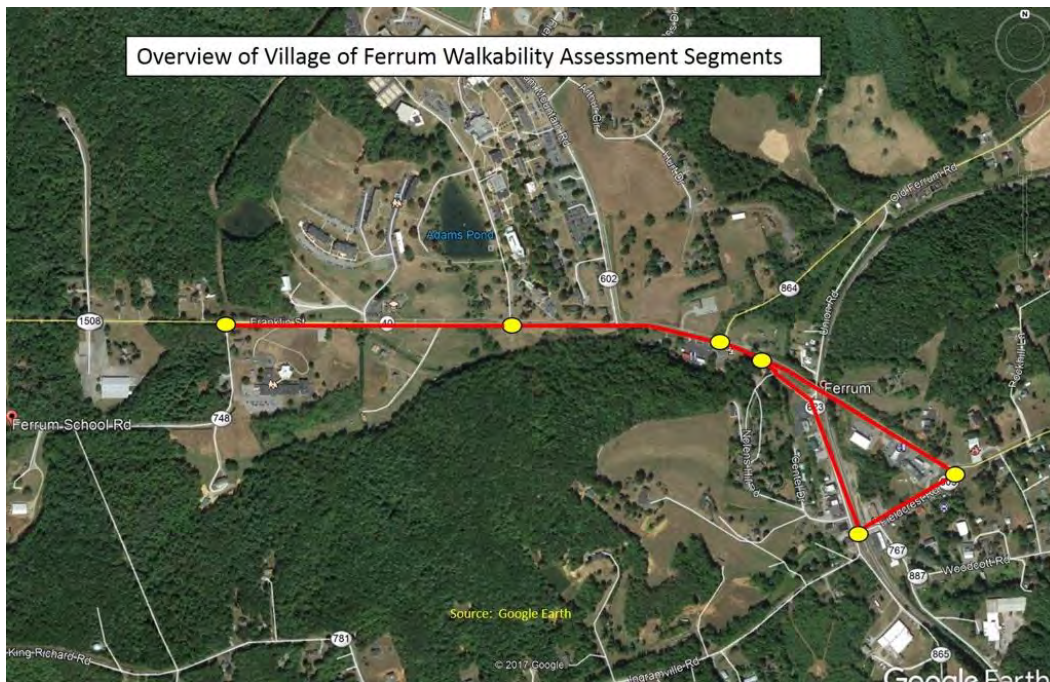
Discussion Regarding Next Steps

- Contact YMCA regarding connecting the YMCA's walking loop trail to Windy Lane.
- Use Walkability Checklist (Appendix 4) to assess East Court and Donald Ave.

VILLAGE OF FERRUM

The walkability audit of the village of Ferrum took place in October and November of 2016. A total of 6 street segments were assessed. Five out of six street segments had sidewalks, paths or trails.

A meeting was held in Franklin County on May 24, 2017 to discuss walkability assessment results, prioritize areas of concern, and discuss next steps.



Village of Ferrum Assessment Overview

Ferrum Walkability Assessment Street Segment Summary

Street segments without sidewalks, paths or trails - Fieldcrest: Franklin (Rt 40) to Timberline Rd

Street segments with sidewalks, paths or trails on any or both sides of the street - Franklin St (Rt 40): Old Ferrum Rd to Wiley Dr, Franklin St (Rt 40): Old Ferrum Rd to Fieldcrest Rd, Franklin St (Rt 40): Timberline Rd to Old Ferrum Rd, Franklin St (Rt 40): Wiley Dr to Ferrum School Rd, Timberline Rd: Fieldcrest Rd to Franklin St (Rt 40)

Westlake Walkability Assessment Street Segment Summary

Street segments without sidewalks, paths or trails - Retirement Dr: Professional Drive to Westlake Rd, Roanoke St: Westlake Rd to Builder's Pride, Apron Rd: Shoppers Pride Dr to Westlake Rd, Morewood Rd: Westlake Rd to Village Springs Dr, Village Spring Drive: Morewood Rd to Shopper's Pride Drive, Booker T Washington Highway (Route 122): Westlake Rd/Morewood Rd to Scruggs Rd, Booker T. Washington Highway (Route 122): Grand Home Furnishing Outlet to Morewood Rd/Westlake Rd, Route 122 (Booker T Washington Hwy): Builder's Pride to Westlake

Street segments with sidewalks, paths or trails on any or both sides of the street - Shoppers Pride Dr: Route 122 to Westlake Rd, Professional Dr: Westlake Rd to Retirement Dr, Westlake Rd: Retirement Dr to Roanoke St, Westlake Rd: Apron Rd to Professional Dr, Builder's Pride: Roanoke St to Route 122

Discussion at the walkability assessment meeting brought developing plans for improving walkability to light. A trail network that includes a Booker T. Washington National Monument connector to a developed area is in progress. This will include a greenway trail to Westlake, a bridge over a creek and a pedestrian crosswalk. It was also noted that there is a plan in place to connect a sidewalk where there is a gap on Westlake Rd. The walkability assessments documented many street segments without sidewalks, paths, or trails. However, the Westlake-Hales Ford area plan will include many of the segments without sidewalks that will in turn become part of the trail/greenway. It was noted that the lack of sidewalk along Route 122 in front of Grand Home Furnishing and other businesses contributes to quite a dangerous environment in which to walk. Additionally, the Morewood Rd segment was not walkable or safe at all. It was noted that Brookview Dr could be a possible connector to the walkable section of the Village Spring Drive segment. Barriers to sidewalk development were discussed, and issues with VDOT maintenance were identified.



Morewood Rd: No curb, gutter or sidewalk



CVS sidewalk that ends abruptly



Poor sidewalk conditions in Westlake

Discussion Regarding Next Steps

- The Walkability Checklist (Appendix 4) could be used pre- and post- Westlake-Hales Ford area plan to assess changes in walkability.
- Planners can use the walkability assessments and report to gather support from stakeholders in order to address sidewalk maintenance issues and the need for pedestrian crosswalks.

TOWN OF BOONES MILL

The walkability audit of Boones Mill took place in October and November of 2016. A total of five street segments were assessed. One out of five street segments had sidewalks, paths or trails.

A meeting was held in Franklin County on May 24, 2017 to discuss walkability assessment results, prioritize areas of concern, and discuss next steps.



Boones Mill Walkability Assessment Overview

Boones Mill Walkability Assessment Street Segment Summary

Street segments without sidewalks, paths or trails - Boon Street: US 220 to Church Hill St, Boones Mill Road: Church Hill St to Depot Dr, Church Hill St: US 220 to Boones Mill Rd, Easy St: Boon St to end of state maintenance

Street segments with sidewalks, paths or trails on any or both sides of the street - Main St: Boon St to Church Hill St

Discussion at the walkability assessment meeting highlighted the fact that funding is limited, and roads maintained by VDOT present barriers to maintenance and making changes to improve walkability. Walkability assessments noted busy roadways and the need for sidewalks and paved shoulders. Smaller projects, such as picnic tables, water fountains and tree planting could improve appeal and walkability features. The idea of a tree walk was discussed and could possibly be implemented in partnership with Carilion. Segments for future assessments include the pathway behind buildings at Virgil H Goode Hwy. However, it was noted that the property owners would need to be contacted.

Discussion Regarding Next Steps

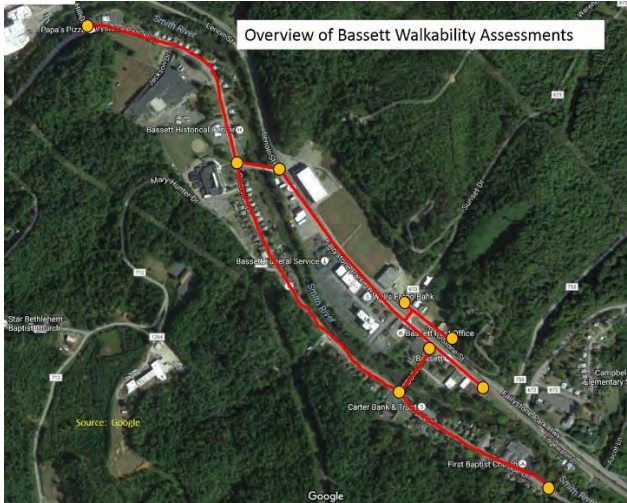
- Smaller “low-hanging fruit” changes are the most feasible in Boones Mill, such as picnic tables, water fountains and tree planting.
- There is a strong interest in partnering with Carilion to plant trees and establish a “tree walk” throughout Boones Mill.

HENRY COUNTY

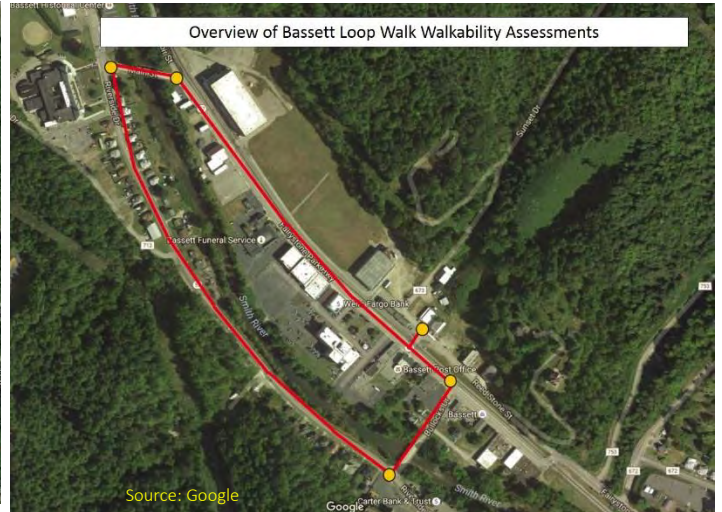
TOWN OF BASSETT

The walkability audit of the town of Bassett took place in December of 2016. A total of 8 street segments were assessed. Six out of eight street segments had sidewalks, paths or trails.

A meeting was held in Henry County on June 1, 2017 to discuss walkability assessment results, prioritize areas of concern, and discuss next steps.



Bassett Walkability Assessment Overview



Bassett Loop Walk Overview

Bassett Walkability Assessment Street Segment Summary

Street segments without sidewalks, paths or trails - Sunset Dr: Fairystone Park Hwy to Reed Stone St, Reed Stone St: Sunset Dr to "Tom's" building

Street segments with sidewalks, paths or trails on any or both sides of the street - Fairystone Park Hwy: Lenoir St to Riverside Dr (Main St), Bullocks Dr: Riverside Dr to Fairystone Park Hwy, Sunset Dr: Fairystone Park Hwy to Reed Stone St (adj. to depot w/RR crossing), Riverside Dr: Fairystone Park Hwy/Bridge to Bullocks Dr, Riverside Dr: Bullocks Dr to First Baptist Church, Fairystone Park Hwy: Riverside Dr/Bridge to Trent Hill Dr

Walkability assessments and discussion among meeting attendees revealed areas of concern with sidewalk conditions and connectivity. The sidewalk at Sunset Dr near depot lacks connectivity. Basic maintenance is needed on Fairystone Park Highway. Additionally, curb cuts are needed at the entrance to the Bassett Walker facility. Connectivity issues include lack of sidewalks connecting to the bridge to Trent Hill. Further, crosswalks to the EMI bridge are needed. The sidewalk between the library and EMI is broken and in need of repair. Priority segment areas were discussed at the meeting and agreed upon. The main areas of concern include connectivity from Fairystone Park Highway at the Historical society to the other side of the bridge. Further, connecting the Small Town Collaborative area and back to Riverside is a priority. The ultimate goal for walkability is to connect a trail from Bassett to Fieldale.

A separate assessment for the Bassett Loop was not included in this report, however, these segments overlap the walkability assessments included within the full walkability assessment for the Town of Bassett (see above).



Fairystone Park Hwy: Northeast side from intersection of Trent Hill Dr to bridge across from EMI



Fairystone Park Hwy: Southwest side east end of bridge going southeast



Riverside Dr southwest side going northwest



Riverside Dr southwest side going southeast

Discussion Regarding Next Steps

- Could apply for SMART SCALE funding in order to improve sidewalk conditions and increase connectivity, if Henry County establishes Urban Development Area (UDA) in Bassett. Transportation Alternatives (TA) funding could also be explored as a funding source.
- Ideally, next steps will focus on connecting the trail from Bassett to Fieldale. It will be important to work with planners, stakeholders, and community members to help facilitate this goal.

TOWN OF COLLINSVILLE

The walkability audit of Collinsville took place in November of 2016. A total of five street segments were assessed. Four out of five street segments had sidewalks, paths or trails.

A meeting was held in Henry County on June 1, 2017 to discuss walkability assessment results, prioritize areas of concern, and discuss next steps.

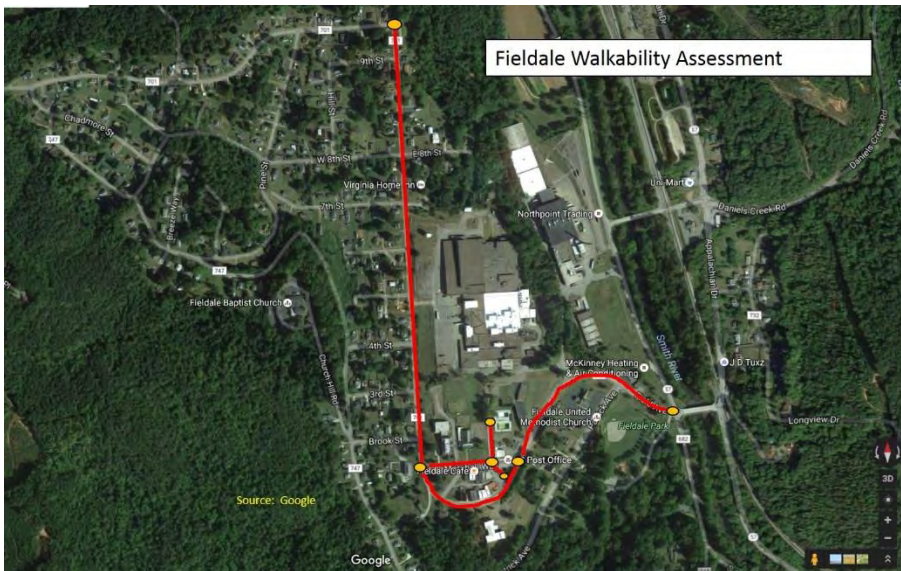
Discussion Regarding Next Steps

- Important to continue discussion around sidewalk maintenance and installation, especially along Daniels Creed Rd to connect commercial area to residential area.
- Could apply for SMART SCALE funding to improve sidewalk connectivity in Collinsville. Transportation Alternatives (TA) funding could be another potential funding source.
- Use Walkability Checklist (Appendix 4) to assess John Redd Blvd from Virginia Ave to North Daniels Creek Rd

FIELDALE

The walkability audit of Fieldale took place in October of 2016. A total of five street segments were assessed. All five street segments had sidewalks, paths or trails.

A meeting was held in Henry County on June 1, 2017 to discuss walkability assessment results, prioritize areas of concern, and discuss next steps.



Fieldale Walkability Assessment Overview

Fieldale Walkability Assessment Street Segment Summary

Street segments assessed - Field Ave: Marshall Way to Fieldale Park Entrance/River Rd, Field Ave: Marshall Way (West) to Marshall Way (East), Field Ave: 10th St to Marshall Way, Field Ave: Mill Ave to Marshall Way, Mill Ave: Field Ave to rear of Fieldale Community Center.

Although the Fieldale street segments assessed have sidewalks, many are in need of maintenance and repair. Further, walkability assessments noted a lack of crossing signals and crosswalks throughout the area. On Field Ave - Brook St, the sidewalk is without a foundation underneath and sits 2-3.5" in midair (see images below). The Field Ave segments are in need of repair. There are many cracks in the sidewalks with missing concrete, making it difficult to walk safely. A sidewalk ends abruptly on Field Ave from Marshall Way to Brook St (see image below). Improvements along Marshall Way, Mill Ave, and Field Ave would improve walkability for pedestrian use.



Field Ave: from Brook St to 10th St



Field Ave: from Brook St to 10th St



Field Ave: from Brook St to 10th St



Field Ave: from Marshall Way to Brook St

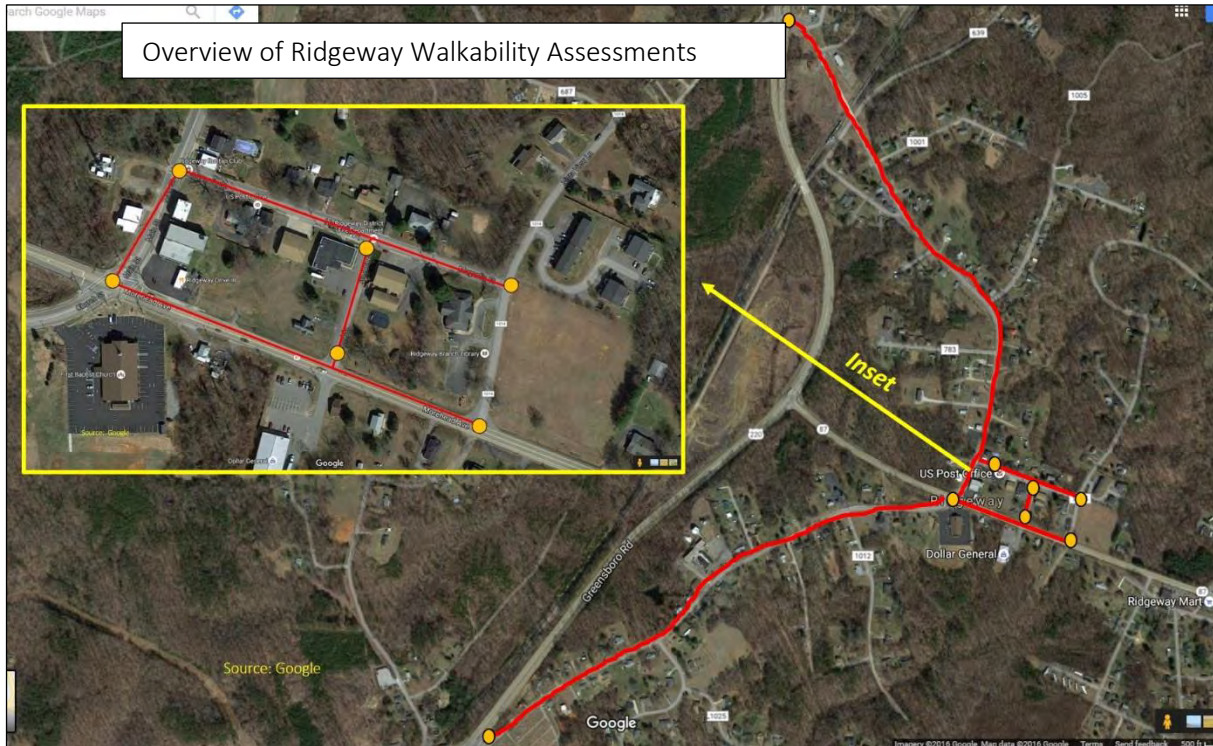
Discussion Regarding Next Steps

- Lobby for sidewalk maintenance on Field Ave, i.e. sidewalk grinding and repair of foundation overhang from Brook St to 10th St.

TOWN OF RIDGEWAY

The walkability audit of the town of Ridgeway took place in January and February of 2017. A total of five street segments were assessed. Three out of five street segments had sidewalks, paths or trails.

A meeting was held in the town of Ridgeway on Monday, July 10, 2017 to discuss walkability assessment results, prioritize areas of concern, and discuss next steps.



Ridgeway Walkability Assessment Overview

Ridgeway Walkability Assessment Street Segment Summary

Church Street (US 220 Business): Morehead Ave (US 87) to Greensboro Road (US Route 220)

The main area of concern captured in the walkability assessment and highlighted in conversation at the meeting is the lack of a pedestrian crossing signal at Church and Main streets at Route 87. It was noted that there has been previous discussion on the construction of a pedestrian signal at this intersection. A sidewalk is only present on one side of the street, and is not continuous. There are large gaps, no curb cuts, and the sidewalk stops abruptly at Mulberry Road. Pedestrian safety was raised as the greatest concern.

Main Street (US 220 Business): Morehead Ave (US Route 87) to Greensboro Road (US Route 220)

A sidewalk is present on one side of the street and is generally in very good condition. However, the sidewalk stops at the bridge which is the town limit. Connecting sidewalks on either side would improve walkability significantly. This segment connects to downtown Ridgeway. Antioch Baptist Church has sidewalks, and it was discussed that a crosswalk to link the two sidewalk systems would be ideal.

Almond Street: Morehead Ave (US Route 87) to Magnolia Street

This segment does not have a sidewalk on either side of the street. The intersection of Almond St and Morehead Ave was identified by VDOT as a high crash location with frequent accidents. No traffic or pedestrian signal is present. The Ridgeway walkability meeting attendees discussed the possibility of

Smart Scale funding to establish a pedestrian signal and traffic light. Almond Street connects Magnolia to Morehead and there is a Dollar General across the street. Further, improving walkability in this area would enable community members to walk to Woody's Grocery which is down the road on Morehead Ave.

Magnolia Street: Main St (US Route 220 Business) to Vista View Lane

According to meeting attendees, Magnolia Street is the "main street" of Ridgeway. The US Post Office and Fire Department are located on this segment. A sidewalk is located on one side, but stops at the Ridgeway District Volunteer Rescue Squad, leaving no sidewalk between essentially Almond St and Vista View Ln. Lack of crossing signals and curb cuts impede walkability. Further, limited parking availability forces many cars to park on the street.

Morehead Ave (US Route 87): Main St (US Route 220 Business) to Vista View Lane

The walkability meeting's group consensus reflects the assessment tool which notes that this segment is very dangerous and not walkable. There are no sidewalks, however, the segment links the library and Dollar General. Lack of crossing signals/crosswalks, curb cuts, and presence of fast traffic impede walkability.

Additional Notes

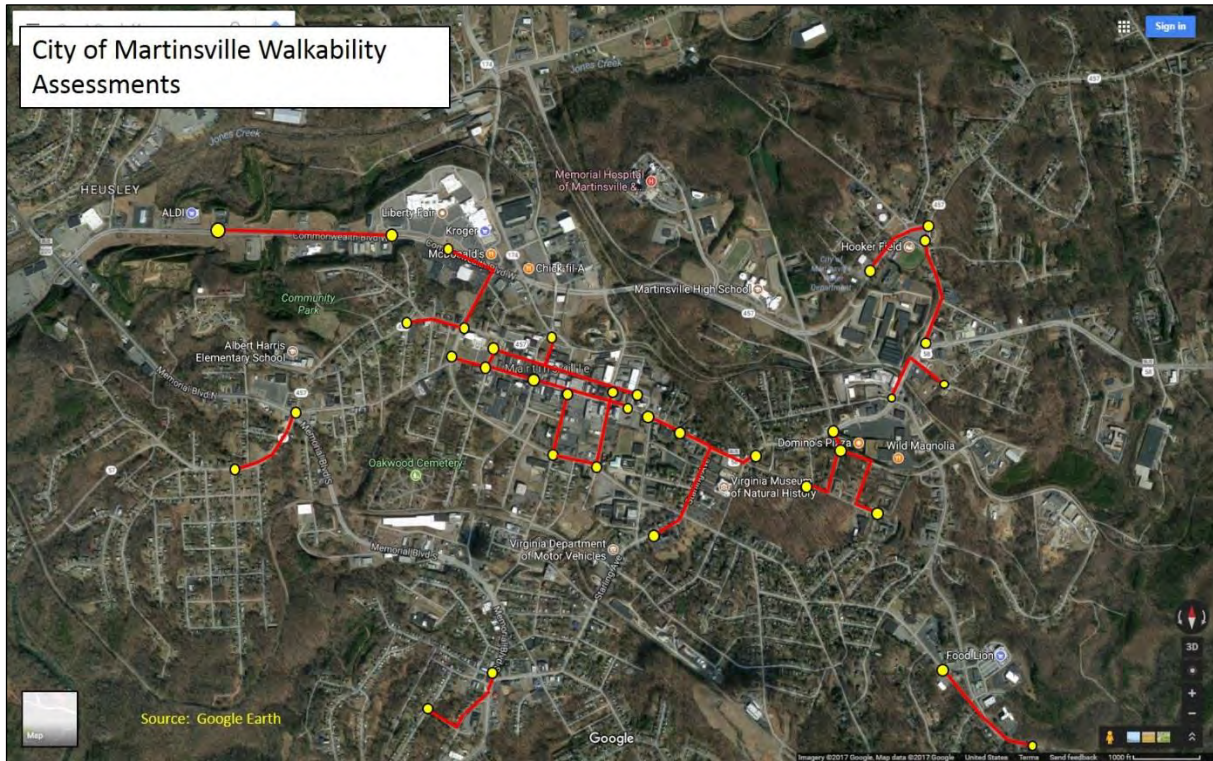
It was discussed that the town's center is between two main subdivisions: Edgewood and Huntington Hills. Many residents walk from either subdivision to the town center which houses the library, post office, grocery and more. The town boundary has remained the same since 1890 and will potentially expand to include all of both subdivisions. Town-owned roads may be a unique opportunity for repurposing into walkable roads and/or trail systems to connect the town. Smart Scale and Transportation Alternatives may be avenues to explore for funding to improve walkability. Joe Bonanno, WPPDC Regional Planner, is able to provide more information on the Virginia Smart Scale funding and potential solutions to walkability issues.

Discussion Regarding Next Steps

- Ridgeway meeting attendees are encouraged to join the West Piedmont Complete Streets Coalition.
- Explore possibility of repurposing town-owned roads into walkable roads and/or trail systems to connect the town of Ridgeway.
- Could apply for SMART SCALE and Transportation Alternative funding to establish signals and pedestrian crosswalks at Almond St and Morehead Ave intersection, which is a VDOT-identified high crash location.

CITY OF MARTINSVILLE

The walkability audit of the City of Martinsville took place in October and November of 2016 and January, February and March of 2017. Twenty-three street segments were assessed in addition to a loop of six street segments. Twenty-seven out of thirty street segments had sidewalks, paths or trails.



City of Martinsville Walkability Assessment Street Segment Summary

Street segments without sidewalks, paths or trails - Madison St/Randolph St/Church St Ext: Madison St to Church St Ext @ Patrick Henry Ave, Commonwealth Blvd: Baymont Inn & Suites to Applebee's, Fayette St: Second St to shopping center @ intersection of Memorial & Fayette

Street segments with sidewalks, paths or trails on any or both sides of the street –Brookdale St to Spruce St: Sprucedale Dr to Prospect Hill Dr, Cherry St/E Church St: Boden St to Brookdale St, E Church St: Bridge St to Clay St, E Church St/Booker Rd/Church St Ext: E Church St/Patrick Henry Mall to Church St Ext at Bondurant St, Commonwealth Blvd: Grace Network to Hooker Field Rd, Starling Ave/E Church St: Piedmont Arts to Library on E Church St, Ellsworth St: West Main St to E Market St, Broad St: E Market St to E Church St, Moss St: E Church to Visitors' Center, E Market St: Ellsworth St to Broad St, W Main St: Visitors' Center to Ellsworth St, E Church St: Broad St to Moss St, English St to Douglas Ave to Memorial Blvd to Starling Ave: Graves St to Starling Ave, Fayette St/W Market St/ Village of Martinsville: Fayette St to Commonwealth Blvd/Village of Martinsville, E Church St: Public Library to Silverbell Spur Trailhead, W Main St: Moss St to Franklin St/Liberty St, Chatham Rd: Hardee's to Commonwealth Blvd, E Church St: W Market to Bridge St, E Main St: Bridge St to Clay St, Fayette St: W Market to High St



Martinsville Loop segments - West Main St: Martinsville Visitors Center to Ellsworth St, Ellsworth St: West Main St to East Market St, East Market St: Ellsworth St to Broad St, Broad St: East Market St to East Church St, East Church St: Broad St to Moss St, Moss St: East Church St to Visitors Center

Priority segments and areas of concern in the city of Martinsville include Commonwealth Boulevard from the Baymont Inn to Applebees. This segment lacks a sidewalk and is difficult to walk along safely due to heavy traffic, short traffic signal cycles, and lack of crossing signals. Additionally, sidewalk design and conditions could be improved on Brookdale St from Sprucedale Dr to Prospect Hill Dr, as curb cuts and crosswalks/signals are needed. Moss St from E Church to Visitor’s Center is also in need of a crosswalk. Meeting attendees agreed that crosswalks and curb cuts are of greatest concern. Additionally, sidewalk connectivity is important for safety and accessibility. Opportunities to improve walkability include applying for Virginia’s SMART SCALE funding. Promoting walkability in conjunction with the Paradise project could also open avenues for walkability changes.



Sidewalk deficiencies in Martinsville include uneven pavement and curb cuts needing repair



Pedestrians walk in grass without sidewalk



Lack of pedestrian crosswalk on Commonwealth

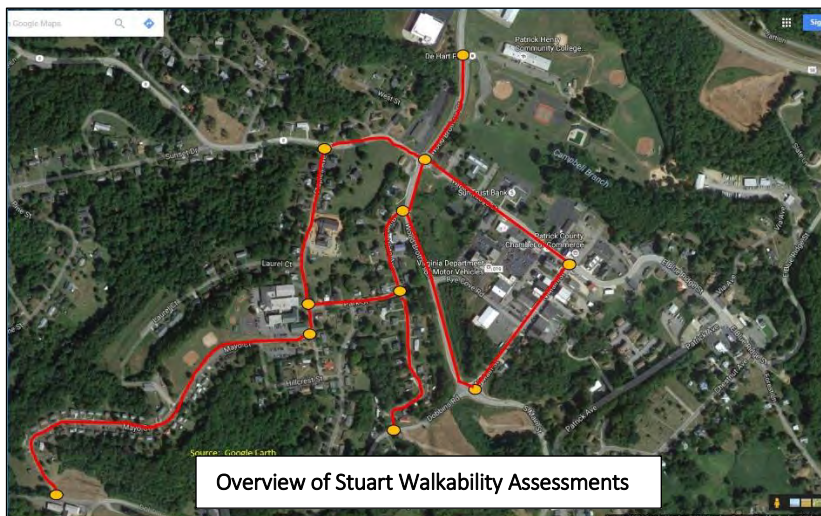
Discussion Regarding Next Steps

- Utilize the Walkability Assessment Checklist (Appendix 4) to evaluate walkability surrounding the Paradise project site before any changes are made. A pre-post assessment could capture improvements in walkability as a result of the Paradise project.

PATRICK COUNTY

TOWN OF STUART

The walkability audit of the town of Stuart took place in November of 2016. A total of 17 street segments were assessed, including both the main assessment and the Loop Walk. Fifteen out of 17 street segments had sidewalks, paths or trails.



Stuart Walkability Assessment Overview



Stuart Loop Walk

Town of Stuart Assessment Street Segment Summary

Street segments without sidewalks, paths or trails - Staples Avenue: Park St to Mayo Court, Wood Brothers Drive: N Main St to Blue Ridge St

Street segments with sidewalks, paths or trails on any or both sides of the street - Buena Vista Ave: Park St to Dobbins Rd, Buena Vista Ave: Wood Brothers Dr to Park St, Mayo Court: Staples Ave to Riverside Dr, North Main St: E. Blue Ridge St to S Main St/Wood Brothers Dr, Park St: Staples Ave to Buena Vista Ave, Staples Ave: Park St to W. Blue Ridge St, West Blue Ridge St: Staples Ave to Wood Brothers Dr, West Blue Ridge St: Wood Brothers Dr to N Main St, Wood Brothers Drive: W Blue Ridge St to DHCC

Stuart Loop - Commerce Street: Patrick Ave to Mayo River Trail Parking Lot, Patrick Ave: Commerce St to end of block (at intersection of S Main St), South Main St: Patrick Ave (crossover) to N Main St, Chestnut Ave: E Blue Ridge to Patrick Ave, E Blue Ridge St: Chestnut Ave to N Main St, N Main: E Blue Ridge to S Main/Wood Brothers Dr

Walkability assessments revealed the need for curb cuts and crosswalks. Some sidewalk areas are overgrown with grass and weeds. Overgrowth and cracks in sidewalks impede walkability in segments with sidewalks.

APPENDICES

Appendix 1 - West Piedmont Walkability Assessment Tool

Appendix 2 - Walkability Assessment Summary Key

Appendix 3 - Walkability Assessment Summaries

Appendix 4 - Additional Resources

APPENDIX 1: WEST PIEDMONT WALKABILITY ASSESSMENT TOOL



Street/Road Name: _____

From (cross street): _____ To: _____

Conducted by: _____ Date: _____ Time: _____

Instructions

For each question below, please circle the number which best corresponds to the value listed in the Ranking Scale below. There are also some Yes/No questions, so please circle the one that best addresses the question (Tabulators, Yes = 0 and No = 6). A map of the road segment you are evaluating has been attached to this assessment. If you have identified any issues, please write the question number on the map to point out the location of where the issue exists. For example, for Question #5, please write "5" on the map approximately where a gap exists in a sidewalk. If possible, please include photos of the issues you have mapped. Good luck!

Ranking Scale					
1 = Excellent	2 = Very Good	3 = Good	4 = Some Issues	5 = Poor	6 = Very Poor

1) Are there sidewalks, paths, or trails on any or both sides of this street?

Please circle one: Yes No

Briefly describe the type of walkway present, if one is present, and describe any pedestrian activity you observe along the street segment:

2) If sidewalk(s), path(s), or trail(s) is/are present, what is the condition (are there major cracks or serious deficiencies)?

Please circle one: 1 2 3 4 5 6

Briefly discuss location and nature of condition(s):

3) How safe do you feel using the sidewalk, path, or trail?

Please circle one: 1 2 3 4 5 6

Briefly discuss any issues which make you feel uncomfortable walking on this street segment:

4) Is this sidewalk, path, or trail able to accommodate wheelchairs, strollers, or other personal mobility apparatus?

Please circle one: Yes No

Briefly discuss any issues that may relate to the inability of the sidewalk to accommodate any of the devices described above:

5) Is the sidewalk, path, or trail continuous (without gaps)?

Please circle one: Yes No

Briefly discuss any gaps or obstructions prohibiting the sidewalk's continuity:

6) Is the width of the sidewalk, path, or trail a minimum of 5 feet to enable two pedestrians or a pedestrian and a wheelchair to pass each other?

Please circle one: Yes No

Briefly discuss the width of this walkway, if relevant:

7) Does this sidewalk, path, or trail have curb cuts to enable wheelchairs, strollers, or personal mobility devices access?

Please circle one: Yes No

Briefly describe the presence or absence of curb cuts and their conditions (for example, are there lips between the ramp and the street which may be obstacles, are ramps too steep, etc.):

8) Is the sidewalk, path, or trail free of obstructions such as utility poles, shrubs, signs, etc.?

Please circle one: Yes No

Briefly discuss the presence of any obstructions:

9) Are there crosswalks and/or crossing signals present at intersections?

Please circle one: Yes No

Briefly discuss the presence or absence of crosswalks/crossing signals:

10) Is this sidewalk part of a larger pedestrian network, such as a series of interconnected sidewalks and/or trails in the neighborhood or local area?

Please circle one: Yes No

Please discuss any observable conditions you believe are relevant:

11) Did you feel comfortable crossing the streets? Please circle one: Yes No

Please check all that apply:

<input type="checkbox"/> Road is too wide	<input type="checkbox"/> Crossing signal did not provide enough time
<input type="checkbox"/> Lack of crossing signals	<input type="checkbox"/> Lack of crosswalks
<input type="checkbox"/> The crossing signal made us wait too long	<input type="checkbox"/> Parked cars, trees, or other obstructions blocked view of oncoming traffic
<input type="checkbox"/> Curb ramps are needed or require repair	<input type="checkbox"/> Traffic is moving too fast

Briefly discuss other issues not listed above:

12) What destinations are located in the area?

Please check all that apply:

- | | |
|---|--|
| <input type="checkbox"/> Small grocery or convenience store | <input type="checkbox"/> Diner, restaurant, or café |
| <input type="checkbox"/> Farmers' market | <input type="checkbox"/> Pharmacy |
| <input type="checkbox"/> Supermarket | <input type="checkbox"/> Entertainment venue |
| <input type="checkbox"/> Place of worship | <input type="checkbox"/> Post office |
| <input type="checkbox"/> Bank | <input type="checkbox"/> Library |
| <input type="checkbox"/> Laundromat or dry cleaner | <input type="checkbox"/> Fitness center (gym, YMCA, etc.) |
| <input type="checkbox"/> Community center/senior center | <input type="checkbox"/> Park/trailhead/neighborhood space |
| <input type="checkbox"/> School | <input type="checkbox"/> College or technical school |
| <input type="checkbox"/> Retail establishments | <input type="checkbox"/> Workforce/employment centers |
| <input type="checkbox"/> Parking lots | <input type="checkbox"/> Civic use (police/fire station/city hall) |

Please list any other destinations not listed above:

13) How comfortable and pleasant was your walk?

Please check all that apply:

- | | |
|---|---|
| <input type="checkbox"/> More trees, grass, or flowers needed | <input type="checkbox"/> Did not feel personally secure |
| <input type="checkbox"/> Trash present, unkempt | <input type="checkbox"/> Not well maintained |
| <input type="checkbox"/> No bench or resting place | <input type="checkbox"/> Traffic moving too fast |
| <input type="checkbox"/> Not well lit (if day, are any streetlights present?) | |

Please list any deficiencies not listed or elaborate on those you checked:

14) Is a buffer located between the sidewalk and the street?

Please circle one: Yes No

Please check all that apply:

- | | |
|------------------------------------|--------------------------------------|
| <input type="checkbox"/> Trees | <input type="checkbox"/> Landscaping |
| <input type="checkbox"/> Bike Lane | <input type="checkbox"/> Parked cars |
| <input type="checkbox"/> Other | |

Please note that the questions in this questionnaire originate from the “Healthy Communities: The Walkability Assessment Tool,” originally published by the University of Delaware Institute for Public Administration. Go Healthy West Piedmont has modified that document to meet the needs of the West Piedmont Complete Streets Coalition.

APPENDIX 2: WALKABILITY ASSESSMENT SUMMARY KEY

Walkability Assessment Summary Key

✓	yes (questions 2+3: 1-3 circled)
✗	no (questions 2+3: 4-6 circled)

Note: Any part of the walkability assessment tool that was left blank (i.e. yes/no not circled, no number circled for questions 2+3, or no comments) **were intentionally left blank in the summary packets.** Please keep this in mind when reviewing packets and taking sidewalk scores into consideration.

An asterisk (*) in the sidewalk score indicates no sidewalk, path or trail was marked on the walkability assessment, therefore no score can be generated.

Walkability Assessment Summary Packet	Walkability Assessment Tool
The following questions are in regards to sidewalks, paths or trails:	
Sidewalks, paths or trails?	1) Are there sidewalks, paths, or trails on any or both sides of this street? Please circle one: Yes No Briefly describe the type of walkway present, if one is present, and describe any pedestrian activity you observe along the street segment:
Condition?	2) If sidewalk(s), path(s), or trail(s) is/are present, what is the condition (are there major cracks or serious deficiencies)? Please circle one: 1 2 3 4 5 6 Briefly discuss location and nature of condition(s):
How safe do you feel?	3) How safe do you feel using the sidewalk, path, or trail? Please circle one: 1 2 3 4 5 6 Briefly discuss any issues which make you feel uncomfortable walking on this street segment:
Accommodate wheelchairs/strollers?	4) Is this sidewalk, path, or trail able to accommodate wheelchairs, strollers, or other personal mobility apparatus? Please circle one: Yes No Briefly discuss any issues that may relate to the inability of the sidewalk to accommodate any of the devices described above:
Continuous?	5) Is the sidewalk, path, or trail continuous (without gaps)? Please circle one: Yes No Briefly discuss any gaps or obstructions prohibiting the sidewalk's continuity:
Width ≥ 5'?	6) Is the width of the sidewalk, path, or trail a minimum of 5 feet to enable two pedestrians or a pedestrian and a wheelchair to pass each other?

	<p>Please circle one: Yes No</p> <p>Briefly discuss the width of this walkway, if relevant:</p>
Curb cuts?	<p>7) Does this sidewalk, path, or trail have curb cuts to enable wheelchairs, strollers, or personal mobility devices access?</p> <p>Please circle one: Yes No</p> <p>Briefly describe the presence or absence of curb cuts and their conditions (for example, are there lips between the ramp and the street which may be obstacles, are ramps too steep, etc.):</p>
No obstructions?	<p>8) Is the sidewalk, path, or trail free of obstructions such as utility poles, shrubs, signs, etc.?</p> <p>Please circle one: Yes No</p> <p>Briefly discuss the presence of any obstructions:</p>
Crosswalks/signals?	<p>9) Are there crosswalks and/or crossing signals present at intersections?</p> <p>Please circle one: Yes No</p> <p>Briefly discuss the presence or absence of crosswalks/crossing signals:</p>
Larger network?	<p>10) Is this sidewalk part of a larger pedestrian network, such as a series of interconnected sidewalks and/or trails in the neighborhood or local area?</p> <p>Please circle one: Yes No</p> <p>Please discuss any observable conditions you believe are relevant:</p>
Buffer?	<p>14) Is a buffer located between the sidewalk and the street?</p> <p>Please circle one: Yes No</p> <p><input type="checkbox"/> Trees; Landscaping; Bike Lane; Parked Cars; Other</p>
Sidewalk score (10 possible)	
Comfortable crossing street?	<p>11) Did you feel comfortable crossing the streets? Please circle one: Yes No</p> <p><input type="checkbox"/> Road is too wide; Crossing signals did not provide enough time; Lack of crossing signals; Lack of crosswalks; The crossing signal made us wait too long; Parked cars, trees or other obstructions blocked view of oncoming traffic; Curb ramps are needed or require repair; Traffic is moving too fast</p> <p>Briefly discuss other issues not listed above:</p>
Area Destinations (20 possible)	<p>12) What destinations are located in the area?</p> <p>Please check all that apply:</p> <p><input type="checkbox"/> Small grocery store or convenience store; Farmers Market; Supermarket; Place of worship; Bank; Laundromat or dry cleaner; Community center/senior center; School; Retail establishments; Parking lots; Diner, restaurant, or café; Pharmacy;</p>

	<p>Entertainment venue; Post office; Library; Fitness center (gym, YMCA, etc.); Park/trailhead/neighborhood space; College or technical school; Workforce/employment centers; Civic use (police/fire station/city hall, etc.)</p> <p>Please list any other destinations not listed above:</p>
<p>Walk Deficiencies (7 possible)</p>	<p>13) How comfortable and pleasant was your walk?</p> <p>Please check all that apply:</p> <ul style="list-style-type: none"> <input type="checkbox"/> More trees, grass, or flowers needed; Trash present, unkempt; No bench or resting place; Not well lit (if day, are any streetlights present?); Did not feel personally secure; Not well maintained; Traffic moving too fast <p>Please list any deficiencies not listed or elaborate on those you checked:</p>

APPENDIX 3: WALKABILITY ASSESSMENT SUMMARIES

Franklin County

- Town of Rocky Mount
- Village of Ferrum
- Westlake
- Town of Boones Mill

Henry County

- Town of Bassett
- Town of Collinsville
- Fieldale
- Town of Ridgeway

City of Martinsville

Patrick County

- Town of Stuart

Franklin County



Franklin County: Rocky Mount

Street segments without sidewalks, paths or trails on any or both sides of the street:	
Bernard Drive: Cornell Rd to Vantage Dr	
Bernard Drive: Vantage Dr to School Board Rd	
Pendleton St: Bland St to N Main St	
Sycamore St: Rocky Mount Town Boundary to N Main St	
Dent Street: West College St to Franklin St- Rt 40	
Franklin Street: Floyd to Dent St	
Patterson Ave: Orchard Rd to South Main St	

Street segments with sidewalks, paths or trails on any or both sides of the street:	Sidewalk Rating (Out of 10)
North Main St: Circle Dr (N intersection) to Pendleton St	7
North Main St: Pendleton St to Byrd Ln	7
Dent Street: Anderson St to West College St	5
Diamond Ave: Rock Mount Town Limit to Franklin St- Rt 40	8
West College St: Dent St to Spring St	7
Orchard Road: East Court St to Patterson Ave	6
Orchard Road: Patterson Ave to Riverview Ave	6
Maple Ave: N Main St (220 Bus.) to East Church St	5
Franklin St (Rt 40): W Church St/Farmers Market to N Main St (220 Bus.)	6
Church Street: Maple Ave to Franklin St (Rt 40/ Farmers Market)	5
North Main St (220 Bus.): Franklin St (Rt 40) to Maple Ave	6

Franklin County: Rocky Mount

West Piedmont Complete Streets Coalition Franklin County: Rocky Mount Walkability Assessments: Area 1				
The following questions are in regards to sidewalks, paths or trails:	Bernard Drive: Cornell Rd to Vantage Dr	Notes	Bernard Drive: Vantage Dr to School Board Rd	Notes
Sidewalks, paths or trails?	x		x	
Condition?	N/A		N/A	
How safe do you feel?	N/A		N/A	
Accommodate wheelchairs/ strollers?	N/A		N/A	
Continuous?	N/A		N/A	
Width ≥ 5'?	N/A		N/A	
Curb cuts?	N/A		N/A	
No obstructions?	N/A		N/A	
Crosswalks/ signals?	N/A		N/A	
Larger network?	N/A		N/A	
Buffer?	N/A		N/A	
Sidewalk score (10 possible)	*		*	
Comfortable crossing street?	✓		✓	
Area Destinations (20 possible)	3	Grocery/convenience, Worship, Diner/restaurant	5	Grocery/convenience, Worship, School, Retail, Diner/restaurant
Walk Deficiencies (7 possible)				

West Piedmont Complete Streets Coalition Franklin County: Rocky Mount Walkability Assessments: Area 2				
The following questions are in regards to sidewalks, paths or trails:	North Main St: Circle Dr (N intersection) to Pendleton St	Notes	North Main St: Pendleton St to Byrd Ln	Notes
Sidewalks, paths or trails?	✓	Both sides	✓	Both sides
Condition?	✓			
How safe do you feel?	✗		✓	
Accommodate wheelchairs/strollers?	✓		✓	
Continuous?	✓		✓	
Width ≥ 5'?	✗	4'	✗	3.5'
Curb cuts?	✓		✓	
No obstructions?	✓		✓	
Crosswalks/ signals?	✗		✗	
Larger network?	✓		✓	
Buffer?	✓	Landscaping	✓	Landscaping
Sidewalk score (10 possible)	7		7	
Comfortable crossing street?	✗	Road too wide, lack of crossing signals, lack of crosswalks, traffic too fast	✓	
Area Destinations (20 possible)	5	Grocery/convenience, Farmers market, Worship, Diner/restaurant, Civic use	4	Grocery/convenience, Worship, Laundromat, Retail
Walk Deficiencies (7 possible)				

Franklin County: Rocky Mount

West Piedmont Complete Streets Coalition Franklin County: Rocky Mount Walkability Assessments: Area 2				
The following questions are in regards to sidewalks, paths or trails:	Pendleton St: Bland St to N Main St	Notes	Sycamore St: Rocky Mount Town Boundary to N Main St	Notes
Sidewalks, paths or trails?	✗		✗	
Condition?	N/A		N/A	
How safe do you feel?	N/A		N/A	
Accommodate wheelchairs/strollers?	N/A		N/A	
Continuous?	N/A		N/A	
Width ≥ 5'?	N/A		N/A	
Curb cuts?	N/A		N/A	
No obstructions?	N/A		N/A	
Crosswalks/ signals?	N/A		N/A	
Larger network?	N/A		N/A	
Buffer?			N/A	
Sidewalk score (10 possible)	*		*	
Comfortable crossing street?	✓		✓	
Area Destinations (20 possible)	5	Grocery/convenience, Farmers market, Worship, Laundromat, Diner/restaurant	3	Grocery/convenience, Worship, Diner/restaurant
Walk Deficiencies (7 possible)			2	Trash present, did not feel secure

West Piedmont Complete Streets Coalition Franklin County: Rocky Mount Walkability Assessments: Area 3				
The following questions are in regards to sidewalks, paths or trails:	Dent Street: Anderson St to West College St	Notes	Dent Street: West College St to Franklin St- Rt 40	Notes
Sidewalks, paths or trails?	✓	One	✗	
Condition?	✓		N/A	
How safe do you feel?			N/A	
Accommodate wheelchairs/ strollers?	✓		N/A	
Continuous?	✓		N/A	
Width ≥ 5'?	✗		N/A	
Curb cuts?	✓		N/A	
No obstructions?	✗	Poles, shrubs, weeds over walkway	N/A	
Crosswalks/ signals?	✗		N/A	
Larger network?	✓		N/A	
Buffer?			N/A	
Sidewalk score (10 possible)	5		*	
Comfortable crossing street?	✓		✗	
Area Destinations (20 possible)	4	Comm. center, School, Pharmacy, Park/trailhead	3	Comm. center, School, Pharmacy
Walk Deficiencies (7 possible)	1	Not well maintained	2	Did no feel secure, traffic fast, no sidewalk/trail

Franklin County: Rocky Mount

West Piedmont Complete Streets Coalition Franklin County: Rocky Mount Walkability Assessments: Area 3				
The following questions are in regards to sidewalks, paths or trails:	Diamond Ave: Rock Mount Town Limit to Franklin St- Rt 40	Notes	West College St: Dent St to Spring St	Notes
Sidewalks, paths or trails?	✓	One side, 90% stops at RR crossing	✓	One side
Condition?	✓		✓	
How safe do you feel?	✓		✓	Some uneven areas
Accommodate wheelchairs/ strollers?	✓		✓	Power poles in sidewalk, allows 3.5' clearance
Continuous?	✓		✓	4' max, lots of poles
Width ≥ 5'?	✓		✗	
Curb cuts?	✓	Some missing	✓	
No obstructions?	✗	Poles, signs	✗	Poles- also fire hydrants
Crosswalks/ signals?	✗		✗	Low traffic, little need
Larger network?	✓		✓	Connects downtown network
Buffer?	✓		✓	
Sidewalk score (10 possible)	8		7	
Comfortable crossing street?	✓		✓	Lack of crossing signals, lack of crosswalks
Area Destinations (20 possible)			11	Grocery/convenience, Worship, Bank, Comm. center, School, Retail, Parking lots, Pharmacy, Post office, Park, Civic Use
Walk Deficiencies (7 possible)			1	Sidewalk too narrow

West Piedmont Complete Streets Coalition				
Franklin County: Rocky Mount Walkability Assessments: Area 3				
The following questions are in regards to sidewalks, paths or trails:	Franklin Street: Floyd to Dent St	Notes		
Sidewalks, paths or trails?	x			
Condition?	N/A			
How safe do you feel?	N/A			
Accommodate wheelchairs/strollers?	N/A			
Continuous?	N/A			
Width ≥ 5'?	N/A			
Curb cuts?	N/A			
No obstructions?	N/A			
Crosswalks/ signals?	N/A			
Larger network?	N/A			
Buffer?				
Sidewalk score (10 possible)	*			
Comfortable crossing street?		Traffic fast		
Area Destinations (20 possible)	13	Farmers market, Worship, Bank, Comm. center, School, Parking lots, Diner/restaurant, Pharmacy, Entertainment, Post office, Park, College, Workforce		
Walk Deficiencies (7 possible)	2	Did not feel secure, traffic fast		

Franklin County: Rocky Mount

West Piedmont Complete Streets Coalition				
Franklin County: Rocky Mount Walkability Assessments: Area 4				
The following questions are in regards to sidewalks, paths or trails:	Orchard Road: East Court St to Patterson Ave	Notes	Orchard Road: Patterson Ave to Riverview Ave	Notes
Sidewalks, paths or trails?	✓		✓	Only one side
Condition?	x	Minor cracks, surface water	✓	Power poles in sidewalks
How safe do you feel?	✓		✓	
Accommodate wheelchairs/strollers?	✓		✓	Mostly, lots of power poles
Continuous?	✓		✓	
Width ≥ 5'?	✓	Areas w/hedges/poles	x	~4'
Curb cuts?	✓		✓	
No obstructions?	x	Utility poles/shrubs	x	Shrubs, poles, fire hydrants
Crosswalks/ signals?	x		x	
Larger network?	✓		✓	Residential to East Court
Buffer?			x	
Sidewalk score (10 possible)	6		6	
Comfortable crossing street?	✓	Lack of crosswalks	✓	Lack of crossing signals/crosswalks
Area Destinations (20 possible)	1	Child daycare	1	Child daycare
Walk Deficiencies (7 possible)			1	No bench/resting place

West Piedmont Complete Streets Coalition Franklin County: Rocky Mount Walkability Assessments: Area 4				
The following questions are in regards to sidewalks, paths or trails:	Patterson Ave: Orchard Rd to South Main St	Notes		
Sidewalks, paths or trails?	x	Street is wide enough		
Condition?	N/A			
How safe do you feel?	N/A	Safe neighborhood, low traffic, safe on street even without sidewalk		
Accommodate wheelchairs/strollers?	N/A			
Continuous?	N/A			
Width ≥ 5'?	N/A			
Curb cuts?	N/A			
No obstructions?	N/A			
Crosswalks/ signals?	N/A			
Larger network?	N/A	Disconnected corridor between two main roads that have sidewalks		
Buffer?	N/A			
Sidewalk score (10 possible)	*			
Comfortable crossing street?	✓	Lack of sidewalks		
Area Destinations (20 possible)	3	Worship, parking lots, park/trail, child daycare		
Walk Deficiencies (7 possible)	1	No bench/resting place		

Franklin County: Rocky Mount Loop

West Piedmont Complete Streets Coalition Franklin County: Rocky Mount Walkability Assessments: Area 5				
The following questions are in regards to sidewalks, paths or trails:	Maple Ave: N Main St (220 Bus.) to East Church St	Notes	Franklin St (Rt 40): W Church St/Farmers Market to N Main St (220 Bus.)	Notes
Sidewalks, paths or trails?	✓	Both sides only in portions of this segment	✓	Very walkable, used regularly by pedestrians
Condition?	✓		✓	
How safe do you feel?	✓	Upscale residential	✓	
Accommodate wheelchairs/strollers?	x	Goes from 5' to 4'; pole in middle of sidewalk	x	Multiple streetlamps narrow sidewalk
Continuous?	x		✓	
Width ≥ 5'?	x		x	Streetlamps narrow
Curb cuts?	✓		✓	
No obstructions?	x	Shrubs/utility poles	x	Streetlamps narrow
Crosswalks/ signals?	x	Not at maple & main/tanyard	✓	
Larger network?	✓		✓	
Buffer?	✓	Parked cars	x	
Sidewalk score (10 possible)	5		6	
Comfortable crossing street?	x	Lack of crossing signals/crosswalks; not at Maple + Main with hill	✓	
Area Destinations (20 possible)			5	Farmers market, retail, diner/restaurant, post office, library
Walk Deficiencies (7 possible)	1	Very pleasant. Trash receptacles on sidewalks	0	Very comfortable and pleasant

West Piedmont Complete Streets Coalition Franklin County: Rocky Mount Walkability Assessments: Area 5				
The following questions are in regards to sidewalks, paths or trails:	Church Street: Maple Ave to Franklin St (Rt 40/ Farmers Market)	Notes	North Main St (220 Bus.): Franklin St (Rt 40) to Maple Ave	
Sidewalks, paths or trails?	✓		✓	
Condition?	✓		✓	A few places where intersect w/parking lot there is no sidewalk
How safe do you feel?	✓		✓	
Accommodate wheelchairs/strollers?	✗	Utility poles impede accessibility	✓	
Continuous?	✓		✗	Hub rest parking lot is an issue
Width ≥ 5'?	✗		✗	
Curb cuts?	✓		✓	
No obstructions?	✗	Pole in sidewalk	✓	
Crosswalks/ signals?			✗	None at Main + Maple or Main + Claibanc
Larger network?	✓	Great loop for pedestrians	✓	
Buffer?	✗		✗	
Sidewalk score (10 possible)	5		6	
Comfortable crossing street?			✗	Road too wide, lack of crossing signals/crosswalks
Area Destinations (20 possible)	3	Farmers market, worship, bank	2	Worship, diner/restaurant
Walk Deficiencies (7 possible)	0	Very pleasant	1	No bench/resting place

Franklin County: Ferrum

Street segments without sidewalks, paths or trails on any or both sides of the street:
Fieldcrest: Franklin st (rt 40) to Timberline Rd.

Street segments with sidewalks, paths or trails on any or both sides of the street:	Sidewalk Rating (Out of 10)
Franklin St (rt 40): Old Ferrum Rd to Wiley Dr.	8
Franklin St (rt 40): Old Ferrum Rd to Fieldcrest Rd.	1
Franklin St (rt 40): Timberline Rd to Old Ferrum Rd.	6
Franklin St (rt 40): Wiley Dr. to Ferrum School Rd.	8
Timberline Rd: Fieldcrest Rd. to Franklin St (rt 40)	0

Franklin County: Ferrum

West Piedmont Complete Streets Coalition Franklin County: Ferrum Walkability Assessments				
The following questions are in regards to sidewalks, paths or trails:	Fieldcrest: Franklin st (rt 40) to Timberline Rd.	Notes	Franklin St (rt 40): Old Ferrum Rd to Wiley Dr.	Notes
Sidewalks, paths or trails?	x		✓	only northside
Condition?	n/a		x	cracks and raised spots
How safe do you feel?	n/a		x	nothing b/t you and traffic
Accommodate wheelchairs/ strollers?	n/a		✓	
Continuous?	n/a		✓	except for driveways
Width ≥ 5'?	n/a		✓	mostly- from Old Ferrum Rd to Ferrum Mtn Rd not 5' wide
Curb cuts?	n/a		✓	
No obstructions?	n/a	not enough road for a sidewalk	✓	
Crosswalks/ signals?	n/a		✓	only signage + crosswalks
Larger network?	n/a		✓	
Buffer?	n/a		✓	grass strip 6-8' wide
Sidewalk score (10 possible)	*		8	
Comfortable crossing street?	x	no crosswalks, blocked view of traffic	✓	not great for wheelchairs/strollers
Area Destinations (20 possible)	3	grocery, retail, post office	7	grocery, farmers market, worship, college, diner, civic use, school
Walk Deficiencies (7 possible)	4		1	

Franklin County: Ferrum

West Piedmont Complete Streets Coalition Franklin County: Ferrum Walkability Assessments				
The following questions are in regards to sidewalks, paths or trails:	Franklin St (rt 40): Old Ferrum Rd to Fieldcrest Rd.	Notes	Franklin St (rt 40): Timberline Rd to Old Ferrum Rd.	Notes
Sidewalks, paths or trails?	✓	north side only. no activity	✓	biker activity
Condition?	✗	a lot of gravel covering sidewalks	✓	grass between sections
How safe do you feel?	✗	no barrier, too close to traffic	✓	
Accommodate wheelchairs/strollers?	✗	grade itself going up to the bridge + condition of sidewalks	✓	needs improvement and work on terrain
Continuous?	✓	gravel, guard rail	✓	yes, to police dept
Width ≥ 5'?	✗	may be 3-3.5'	✓	grass growing in it
Curb cuts?	✗		✓	needs improvement for ADA
No obstructions?		guard rail	✗	
Crosswalks/ signals?	✗		✗	
Larger network?	✗		✗	
Buffer?	✗		✗	
Sidewalk score (10 possible)	1		6	
Comfortable crossing street?	✗	no crosswalks	✓	
Area Destinations (20 possible)	6	grocery, farmers market, laundromat, retail, diner, civic use	3	farmers market, diner, civic use
Walk Deficiencies (7 possible)	4		2	needs maintenance

Franklin County and Ferrum College along w/VDOT's Revenue - to conduct a pedestrian bridge over the railroad tracks + Union St adjacent to Shively's Bridge

West Piedmont Complete Streets Coalition Franklin County: Ferrum Walkability Assessments				
The following questions are in regards to sidewalks, paths or trails:	Franklin St (rt 40): Wiley Dr. to Ferrum School Rd.	Notes	Timberline Rd.: Fieldcrest Rd. to Franklin St (rt 40)	Notes
Sidewalks, paths or trails?	✓		✓	partially on side @ business, not RR track side
Condition?	✓	good only on northside, bad on south. some boards on bridge need replacing	✗	where there are sidewalks they are not ADA
How safe do you feel?	✗	north - only grass barriers; south - larger barrier w/trees + fence	✗	not enough sidewalk
Accommodate wheelchairs/strollers?	✓	except for crossovers + bridge boards on south side	✗	sidewalks elevated w/one section w/stairs falling apart
Continuous?	✓		✗	only in front of some bldgs
Width ≥ 5'?	✓		✗	
Curb cuts?	✓		✗	
No obstructions?	✓			chairs along sidewalk
Crosswalks/ signals?	✓	crosswalks but no signals only signage	✗	
Larger network?	✗	connects to elementary school yes on southside, trees/fence; northside- grass 6-8' wide	✗	
Buffer?	✓		✗	
Sidewalk score (10 possible)	8		0	
Comfortable crossing street?	✓		✗	no crosswalks, obstructions block view of traffic
Area Destinations (20 possible)	3	school, parking lots, college	2	bank, diner, apartments
Walk Deficiencies (7 possible)	2	no bench, not well lit, better on southside bc of barriers	4	no bench, not well lit, did not feel secure, not maintained



Franklin County: Westlake

Street segments without sidewalks, paths or trails on any or both sides of the street:	
Retirement Dr: Professional Drive to Westlake Rd.	
Roanoke St: Westlake Rd to Builder's Pride	
Apron: Shoppers Pride Dr. to Westlake Rd.	
Morewood Rd: Westlake Rd to Village Springs Dr.	
Village Spring Drive: Morewood Rd to Shopper's Pride Drive	
Booker T Washington Highway (route 122): Westlake Rd/Morewood Rd to Scruggs rd	
Booker T. Washington Highway (route 122): Grand Home Furnishing Outlet to Morewood Rd/Westlake Rd.	
Route 122 (Booker T Washington Hwy): Builder's Pride to Westlake	

Street segments with sidewalks, paths or trails on any or both sides of the street:	Sidewalk Rating (Out of 10)
Shoppers Pride Dr.: Route 122 to Westlake Rd	6
Professional Dr.: Westlake Rd. To Retirement Dr.	8
Westlake Rd: Retirement Dr. to Roanoke St	5
Westlake Rd: Apron Rd. to Professional Dr.	8
Builder's Pride: Roanoke St. Route 122	5

Franklin County: Westlake

West Piedmont Complete Streets Coalition Franklin County: Westlake Walkability Assessments				
The following questions are in regards to sidewalks, paths or trails:	Shoppers Pride Dr.: Route 122 to Westlake Rd	Notes	Professional Dr.: Westlake Rd. To Retirement Dr.	Notes
Sidewalks, paths or trails?	✓	on one side @ cinema	✓	seniors walking part of segment
Condition?	✓	excellent, not much sidewalk	✓	
How safe do you feel?	✓	during day fine, not at night	✓	very comfortable
Accommodate wheelchairs/strollers?	✓		✓	one section too steep
Continuous?	✗	gaps behind bldgs, no sidewalk before bldgs	✗	
Width ≥ 5'?	✓	width is fine	✓	
Curb cuts?	✗	access in front of cinema only	✓	usable, not too steep
No obstructions?	✓		✓	
Crosswalks/ signals?	✗	no crosswalks @ rt. 122/shopper's pride, apron or SP/westlake	✗	no crosswalks or signals, private rd, not installed
Larger network?	✗		✓	trails/greenway for Westlake-Halesford plan
Buffer?	✓	curbs + gutters	✓	landscaping and parked cars
Sidewalk score (10 possible)	6		8	
Comfortable crossing street?	✓	not much traffic	✓	
Area Destinations (20 possible)	11	supermarket, worship, bank, retail, parking, diner, pharmacy, library, fitness, civic use, entertainment	12	grocery, supermarket, worship, bank, retail, parking, diner, pharmacy, entertainment, library, fitness, civic use
Walk Deficiencies (7 possible)	1	trash	1	no resting area

Franklin County: Westlake

West Piedmont Complete Streets Coalition				
Franklin County: Westlake Walkability Assessments				
The following questions are in regards to sidewalks, paths or trails:	<u>Retirement Dr. Professional Drive to Westlake Rd.</u>	Notes	<u>Roanoke St: Westlake Rd to Builder's Pride</u>	Notes
Sidewalks, paths or trails?	✘	large street w/curb/gutter	✘	just on side w/ a business
Condition?	n/a		n/a	
How safe do you feel?	n/a	no traffic b/c no development	n/a	no traffic
Accommodate wheelchairs/ strollers?	n/a		n/a	not easily b/c would have to turn around + go back to curb cut
Continuous?	n/a		n/a	
Width ≥ 5'?	n/a		n/a	
Curb cuts?	n/a		n/a	
No obstructions?	n/a		n/a	bushes need trimmed
Crosswalks/ signals?	n/a		n/a	
Larger network?	n/a	this will be part of trail/greenway over time Westlake-Hales ford area plan	n/a	will be over time- Westlake-Hales Ford area plan
Buffer?	n/a		n/a	
Sidewalk score (10 possible)	*		*	
Comfortable crossing street?		no traffic	✓	
Area Destinations (20 possible)	10	supermarket, worship, bank, retail, parking, diner, pharmacy, entertainment, library, fitness	11	supermarket, worship, bank, retail, parking, diner, pharmacy, entertainment, library, fitness, civic use
Walk Deficiencies (7 possible)		nothing was developed	1	not well maintained

West Piedmont Complete Streets Coalition				
Franklin County: Westlake Walkability Assessments				
The following questions are in regards to sidewalks, paths or trails:	<u>Westlake Rd: Retirement Dr. to Roanoke St</u>	Notes	<u>Westlake Rd: Apron Rd. to Professional Dr.</u>	Notes
Sidewalks, paths or trails?	✓	segment missing b/c no development	✓	one section not developed/ does not have sidewalk
Condition?	✓		✓	some cracks
How safe do you feel?	✓		✓	
Accommodate wheelchairs/ strollers?	✓	when sidewalk ends no where to go	✓	some debris
Continuous?	✘	one section missing sidewalk	✓	one section not developed
Width ≥ 5'?	✓		✓	
Curb cuts?	✓	except section with no sidewalk	✓	
No obstructions?	✘	utilities need to be moved	✓	
Crosswalks/ signals?	✘			a couple brick crosswalks, maybe some repair needed
Larger network?	✘	part of future trail/greenway	✘	part of future trail/greenway
Buffer?		grass area	✓	grass
Sidewalk score (10 possible)	5		8	
Comfortable crossing street?	✓		✓	
Area Destinations (20 possible)	11	supermarket, worship, bank, retail, parking, diner, pharmacy, entertainment, library, fitness, civic use	11	supermarket, worship, bank, retail, parking, diner, pharmacy, entertainment, library, fitness, civic use
Walk Deficiencies (7 possible)				

Franklin County: Westlake

West Piedmont Complete Streets Coalition Franklin County: Westlake Walkability Assessments				
The following questions are in regards to sidewalks, paths or trails:	<u>Apron: Shoppers Pride Dr. to Westlake Rd.</u>		<u>Builder's Pride: Roanoke St. Route 122</u>	
Sidewalks, paths or trails?	*	just curbs both sides. safer to walk in parking lots	✓	sidewalks close to businesses, not adjacent to st
Condition?	n/a		✓	nice near businesses
How safe do you feel?	n/a	heavy traffic	✓	not much traffic
Accommodate wheelchairs/strollers?	n/a		✓	sidewalks do, but not convenient to walking on trail network
Continuous?	n/a		*	is one big gap
Width ≥ 5'?	n/a			maybe
Curb cuts?	n/a		✓	yes, but not convenient
No obstructions?	n/a		✓	
Crosswalks/ signals?	n/a	at one end of street	*	
Larger network?	n/a	might be part of trail/greenway	*	might be part of trail/greenway
Buffer?	n/a			parked cars
Sidewalk score (10 possible)	*		5	
Comfortable crossing street?	✓		✓	
Area Destinations (20 possible)	11	supermarket, worship, bank, retail, parking, diner, pharmacy, entertainment, library, fitness, civic use	11	supermarket, worship, bank, retail, parking, diner, pharmacy, entertainment, library, fitness, civic use
Walk Deficiencies (7 possible)	1	traffic too fast		it was fine

West Piedmont Complete Streets Coalition Franklin County: Westlake Walkability Assessments				
The following questions are in regards to sidewalks, paths or trails:	<u>Morewood Rd: Westlake Rd to Village Springs Dr.</u>	Notes	<u>Village Spring Drive: Morewood Rd to Shopper's Pride Drive</u>	Notes
Sidewalks, paths or trails?	*	only sidewalk internal to CVS	*	private st w/curb/gutter
Condition?	n/a		n/a	no trail, just road itself
How safe do you feel?	n/a	Morewood rd- not at all	n/a	little traffic
Accommodate wheelchairs/strollers?	n/a	no, not safe at all	n/a	road could be rough for strollers/wheelchairs
Continuous?	n/a		n/a	
Width ≥ 5'?	n/a		n/a	
Curb cuts?	n/a		n/a	
No obstructions?	n/a		n/a	
Crosswalks/ signals?	n/a		n/a	
Larger network?	n/a		n/a	
Buffer?	n/a		n/a	
Sidewalk score (10 possible)	*		*	
Comfortable crossing street?	*	road is wide, no crosswalks or signals, traffic fast, light did not give enough time, had to run across		lack of crosswalks/signals, traffic fast, crossing Rt 122 @ this intersection unsafe
Area Destinations (20 possible)	6	bank, retail, parking, diner, pharmacy, post office	6	bank, retail, parking, diner, pharmacy, post office
Walk Deficiencies (7 possible)	2	not well lit, fast traffic		

Brookview Dr- might be a nice connection to this part of this walkable area

Franklin County: Westlake

West Piedmont Complete Streets Coalition Franklin County: Westlake Walkability Assessments				
The following questions are in regards to sidewalks, paths or trails:	<u>Booker T Washinton Highway (route 1220): Westlake Rd/Morewood Rd to Scruggs rd</u>	Notes	<u>Booker T. Washington Highway (route 122): Grand Home Furnishing Outlet to Morewood Rd/Westlake Rd.</u>	Notes
Sidewalks, paths or trails?	x	some in front of businesses	x	mostly grass
Condition?	n/a	great in front of Grand Piano	n/a	
How safe do you feel?	n/a	really no sidewalks	n/a	
Accommodate wheelchairs/strollers?	n/a	mostly grass exept sidewalk near business	n/a	area mostly grass, not even
Continuous?	n/a		n/a	
Width ≥ 5'?	n/a		n/a	
Curb cuts?	n/a		n/a	
No obstructions?	n/a		n/a	
Crosswalks/ signals?	n/a		n/a	signal @ Scrugg/ rt 122, morewood/ rt 122
Larger network?	n/a		n/a	
Buffer?	n/a		n/a	
Sidewalk score (10 possible)	*		*	
Comfortable crossing street?	x	road is wide,no crosswalks or signals, no curb ramps	x	road is wide,no crosswalks or signals, no curb ramps
Area Destinations (20 possible)	6	bank, retail, parking, diner, pharmacy, post office	6	bank, retail, parking, diner, pharmacy, post office
Walk Deficiencies (7 possible)	3	no bench,not well lit, fast traffic	1	not well lit

West Piedmont Complete Streets Coalition Franklin County: Westlake Walkability Assessments				
The following questions are in regards to sidewalks, paths or trails:	<u>Route 122 (Booker T Washington Hwy): Builder's Pride to Westlake</u>	Notes		
Sidewalks, paths or trails?	x	sidewalk in front of buildings, no trail/path close to 122		
Condition?	n/a	nice, however stairs present		
How safe do you feel?	n/a			
Accommodate wheelchairs/strollers?	n/a			
Continuous?	n/a			
Width ≥ 5'?	n/a			
Curb cuts?	n/a			
No obstructions?	n/a			
Crosswalks/ signals?	n/a			
Larger network?	n/a	possible to be part of trail/greenway		
Buffer?	n/a			
Sidewalk score (10 possible)	*			
Comfortable crossing street?	✓			
Area Destinations (20 possible)	11	supermarket, worship, bank, retail, parking, diner, pharmacy, entertainment, library, fitness, civic use		
Walk Deficiencies (7 possible)		Walked in grass area		



Franklin County: Boones Mill

Street segments without sidewalks, paths or trails on any or both sides of the street:	
Boon Street: US 220 to Church Hill St.	
Boones Mill Road: Church Hill St. to Depot Dr.	
Church Hill St: US 220 to Boones Mill Rd.	
Easy St: Boon St. to end of state maintenance	

Street segments with sidewalks, paths or trails on any or both sides of the street:	Sidewalk Rating (Out of 10)
Main St: Boon St. to Church Hill St.	5

Franklin County: Boones Mill

West Piedmont Complete Streets Coalition Franklin County: Boones Mill Walkability Assessments				
The following questions are in regards to sidewalks, paths or trails:	Boon Street: US 220 to Church Hill St.	Notes	Boones Mill Road: Chrich Hill St. to Depot Dr.	Notes
Sidewalks, paths or trails?	x	needs crosswalks	x	
Condition?	n/a		n/a	
How safe do you feel?	n/a		n/a	busy roadway
Accommodate wheelchairs/ strollers?	n/a		n/a	
Continuous?	n/a		n/a	
Width ≥ 5'?	n/a		n/a	
Curb cuts?	n/a		n/a	
No obstructions?	n/a		n/a	
Crosswalks/ signals?	n/a		n/a	
Larger network?	n/a		n/a	
Buffer?	n/a		n/a	
Sidewalk score (10 possible)	*		*	
Comfortable crossing street?	x		x	lack of crosswalks and signals
Area Destinations (20 possible)	1	retail	2	parking, civic use
Walk Deficiencies (7 possible)	2		1	

Franklin County: Boones Mill

West Piedmont Complete Streets Coalition Franklin County: Boones Mill Walkability Assessments				
The following questions are in regards to sidewalks, paths or trails:	Church Hill St: US 220 to Boones Mill Rd.	Notes	Easy St: Boon St. to end of state maintenance	Notes
Sidewalks, paths or trails?	✗	just a shoulder	✗	none
Condition?	n/a		n/a	
How safe do you feel?	n/a		n/a	
Accommodate wheelchairs/ strollers?	n/a		n/a	
Continuous?	n/a		n/a	
Width ≥ 5'?	n/a		n/a	
Curb cuts?	n/a		n/a	
No obstructions?	n/a		n/a	
Crosswalks/ signals?	n/a		n/a	
Larger network?	n/a		n/a	
Buffer?	n/a		n/a	
Sidewalk score (10 possible)	*		*	
Comfortable crossing street?	✗	lack of crosswalks, signals, an curb cuts	✓	very little traffic
Area Destinations (20 possible)	2	bank, retail	1	civic use
Walk Deficiencies (7 possible)	2		1	

West Piedmont Complete Streets Coalition Franklin County: Boones Mill Walkability Assessments				
The following questions are in regards to sidewalks, paths or trails:	Main St: Boon St. to Church Hill St.	Notes		
Sidewalks, paths or trails?	✓	needs crosswalks b/t businesses w/ramps		
Condition?	✗	needs ramps		
How safe do you feel?	✗			
Accommodate wheelchairs/ strollers?	✓			
Continuous?	✗	not continuous		
Width ≥ 5'?	✓			
Curb cuts?	✓			
No obstructions?	✓			
Crosswalks/ signals?	✗	need in high traffic areas		
Larger network?	✓			
Buffer?	✗			
Sidewalk score (10 possible)	5			
Comfortable crossing street?	✗	lack of crosswalks, signals, an curb cuts		
Area Destinations (20 possible)	3	bank, retail, post office		
Walk Deficiencies (7 possible)	1	more greenery		

Henry County



Henry County: Bassett

Street segments without sidewalks, paths or trails on any or both sides of the street:	
Sunset Dr: Fairystone Park Hwy to Reed Stone St	
Reed Stone St: Sunset Dr to "Tom's" building	

Street segments with sidewalks, paths or trails on any or both sides of the street:	Sidewalk Rating (Out of 10)
Fairystone Park Hwy: Lenoir St to Riverside Dr (Main St.)	1
Bullocks Dr: Riverside Dr to Fairystone Park Hwy	3
Sunset Dr: Fairystone Park Hwy to Reed Stone St (adj. to depot w/RR xing)	3
Riverside Dr: Fairystone Park Hwy/Bridge to Bullocks Dr	6
Riverside Dr: Bullocks Dr to First Baptist Church	3
Fairystone Park Hwy: Riverside Dr/Bridge to Trent Hill Dr	3

Henry County: Bassett

West Piedmont Complete Streets Coalition Henry County Walkability Assessments: Bassett				
The following questions are in regards to sidewalks, paths or trails:	Fairystone Park Hwy: Lenoir St to Riverside Dr (Main St.)	Notes	Bullocks Dr: Riverside Dr to Fairystone Park Hwy	Notes
Sidewalks, paths or trails?	✓	Sidewalk on left side of bridge	✓	Bridge from Riverside Dr to Fairystone there is a sideway on left side w/curb
Condition?	✗	Cracks, uneven path/concrete	✓	
How safe do you feel?	✗	Heavy traffic crossing bridge	✗	Busy vehicle traffic
Accommodate wheelchairs/strollers?	✗	Narrow-one person at a time crossing	✓	
Continuous?	✗	Circles around to Fairystone Park Hwy at right side of road	✗	
Width ≥ 5'?	✗		✗	
Curb cuts?	✗		✗	
No obstructions?	✗		✓	
Crosswalks/ signals?	✗		✗	
Larger network?	✓	Connects w/sidewalk on Fairystone	✗	
Buffer?	N/A		✗	
Sidewalk score (10 possible)	1		3	
Comfortable crossing street?	✗	Lack of crossing signals, crosswalks, curb ramps need repair, traffic fast	✗	Lack of crossing signals, crosswalks, curb ramps need repair, traffic fast
Area Destinations (20 possible)	5	Comm. center, parking lots, library, workforce, civic use	3	Worship, bank, parking lots
Walk Deficiencies (7 possible)	3	No bench, not well lit, did not feel secure	3	Trash, no bench, not well lit

Henry County: Bassett

West Piedmont Complete Streets Coalition Henry County Walkability Assessments: Bassett				
The following questions are in regards to sidewalks, paths or trails:	Sunset Dr: Fairystone Park Hwy to Reed Stone St	Notes	Sunset Dr: Fairystone Park Hwy to Reed Stone St (adj. to depot w/RR xing)	Notes
Sidewalks, paths or trails?	x	Have to cross the RR track. No sidewalks	✓	Only right side to RR crossing at Reed Stone
Condition?	N/A		x	Cracks, uneven, missing concrete
How safe do you feel?	N/A		✓	
Accommodate wheelchairs/strollers?	N/A			Areas wide enough, areas are rough, some concrete missing
Continuous?	N/A		✓	
Width ≥ 5'?	N/A		x	
Curb cuts?	N/A		x	
No obstructions?	N/A		x	Utility poles, signs, missing curb
Crosswalks/ signals?	N/A		x	
Larger network?	N/A		✓	
Buffer?	N/A		x	
Sidewalk score (10 possible)	*		3	
Comfortable crossing street?	x	Lack of crossing signals	x	Traffic fast and heavy
Area Destinations (20 possible)	5	Farmers market, bank, parking lot, post office, civic use	6	Grocery, farmers market, bank, retail, parking lots, civic use
Walk Deficiencies (7 possible)			4	More trees/flowers needed, no bench, not well lit, traffic fast

West Piedmont Complete Streets Coalition Henry County Walkability Assessments: Bassett				
The following questions are in regards to sidewalks, paths or trails:	Riverside Dr: Fairystone Park Hwy/Bridge to Bullocks Dr	Notes	Reed Stone St: Sunset Dr to "Tom's" building	
Sidewalks, paths or trails?	✓	Sidewalk begins at corner of Mary	x	
Condition?	✓	Sidewalks cracked with grass	N/A	
How safe do you feel?	✓	Some trip hazards (grass)	N/A	
Accommodate wheelchairs/strollers?	✓	Handicap entrance to sidewalk @ Mary Hunter	N/A	
Continuous?	✓		N/A	
Width ≥ 5'?	x	Sidewalk 3' wide in most areas	N/A	
Curb cuts?	✓	Only saw 1 curb cut to sidewalk	N/A	
No obstructions?	x	Uneven pavement, telephone poles	N/A	
Crosswalks/ signals?	x		N/A	
Larger network?	✓	Some areas they do connect	N/A	
Buffer?			N/A	
Sidewalk score (10 possible)	6		*	
Comfortable crossing street?	x	Lack of crosswalks, parked cars, traffic fast		Curb ramps need repair, lack of crosswalks, parked cars
Area Destinations (20 possible)	1	Worship	3	Bank, retail, parking lots
Walk Deficiencies (7 possible)	3	No bench/resting place, did not feel secure, traffic too fast		

Henry County: Bassett

West Piedmont Complete Streets Coalition Henry County Walkability Assessments: Bassett				
The following questions are in regards to sidewalks, paths or trails:	Riverside Dr: Bullocks Dr to First Baptist Church	Notes	Fairystone Park Hwy: Riverside Dr/Bridge to Trent Hill Dr	
Sidewalks, paths or trails?	✓		✓	
Condition?	✗	Cracks, grass growing	✗	
How safe do you feel?	✗		✗	
Accommodate wheelchairs/strollers?	✓	From United Methodist Church at Bullocks & Riverside, next to bank	✗	
Continuous?		On left side sidewalk begins at bank	✓	
Width ≥ 5'?	✗	Maybe 5' wide	✗	Approx. 3'
Curb cuts?	✓		✗	
No obstructions?	✗		✗	
Crosswalks/ signals?	✗		✗	
Larger network?			✗	
Buffer?	✓	Trees, parked cars	✓	Narrow buffer of grass
Sidewalk score (10 possible)	3		2	
Comfortable crossing street?		Lack of crosswalks, crossing signals, parked cars, traffic fast	✗	Heavy traffic, only cross at crosswalk
Area Destinations (20 possible)	3	Worship, bank, parking lots	3	Library, restaurants, community/historical center
Walk Deficiencies (7 possible)	3	No bench/resting place, not well lit, not well maintained	4	No benches, not well lit, would not walk at night, traffic



Henry County: Collinsville

Street segments without sidewalks, paths or trails on any or both sides of the street:	
Daniels Creek Rd: Virginia Ave (220 Bus.) to Paul St	

Street segments with sidewalks, paths or trails on any or both sides of the street:	Sidewalk Rating (Out of 10)
Virginia Ave (US 220 Bus.): Daniels Creek Rd to Printers Ln	6
Daniels Creek Rd: Virginia Ave (US 220 Bus.) to Miles Rd	3
John Redd Blvd: Virginia Ave (US 220 Bus.) to Williams St	4
Virginia Ave (US 220 Bus.) Kings Mountain Rd to Daniels Creek Ave	7

West Piedmont Complete Streets Coalition Henry County Walkability Assessments: Collinsville				
The following questions are in regards to sidewalks, paths or trails:	Daniels Creek Rd: Virginia Ave (220 Bus.) to Paul St	Notes	Virginia Ave (US 220 Bus.): Daniels Creek Rd to Printers Ln	
Sidewalks, paths or trails?	*		✓	East side of street, small segment on west side S of Daniels Creek Rd
Condition?	N/A		*	Large cracks/utility pole. Crack deficiencies can be improved.
How safe do you feel?	N/A		✓	Traffic slower than anticipated
Accommodate wheelchairs/strollers?	N/A		✓	Curb cuts everywhere. Spotty areas of cracks that could limit mobility
Continuous?	N/A		✓	Only on east side
Width ≥ 5'?	N/A		*	4' width
Curb cuts?	N/A		✓	Many curb cuts recently installed
No obstructions?	N/A		*	Utility pole obstructs b/t Daniels creek and Oakland rd
Crosswalks/ signals?	N/A		*	
Larger network?	N/A		*	
Buffer?	N/A		✓	2' grass strip
Sidewalk score (10 possible)	*		6	
Comfortable crossing street?	✓	Lack of crossing signals/crosswalks. Very little traffic on cross-streets	✓	Lack of crossing signals/crosswalks
Area Destinations (20 possible)	3	Worship, bank, parking lots, HVAC business, exterminator, insurance	10	Grocery, supermarket, worship, bank, laundromat. retail, parking, diner, pharmacy, library
Walk Deficiencies (7 possible)	1	Not well lit, no sidewalks or buffer between pedestrian and traffic. No lighting	4	More trees needed, no bench, not well lit, not well maintained. Positive-traffic moved slowly

Henry County: Collinsville

West Piedmont Complete Streets Coalition Henry County Walkability Assessments: Collinsville				
The following questions are in regards to sidewalks, paths or trails:	Daniels Creek Rd: Virginia Ave (US 220 Bus.) to Miles Rd	Notes	John Redd Blvd: Virginia Ave (US 220 Bus.) to Williams St	
Sidewalks, paths or trails?	✓	200' section of 5' wide sidewalk in front of Collinsville Baptist Church on S side of road	✓	Small segment adjacent to First Baptist Church near Virginia Ave. Stops short of the YMCA
Condition?	✓	Good condition	✗	Sidewalk ends just short of the YMCA
How safe do you feel?	✗	No sidewalk for most of section	✓	
Accommodate wheelchairs/strollers?	✓	Areas with no sidewalk road is very wide	✓	Wheeled objects may have difficulty accessing adjacent church
Continuous?	✗		✗	Sidewalk is only about 200'
Width ≥ 5'?	✓		✓	Majority of segment does not have sidewalk
Curb cuts?	✗		✓	At Virginia Ave only
No obstructions?	✗	Utility pole partially obstructs sidewalk. Storm sewerer causes 2" lip	✗	2 signs embedded in the sidewalk which partially obstruct, minimally
Crosswalks/ signals?	✗		✗	
Larger network?	✗		✗	Connects to very short sidewalk
Buffer?	✗		✗	
Sidewalk score (10 possible)	3		4	
Comfortable crossing street?	✗	Lack of crossing signals/crosswalks, turning traffic at Wheeler Ave	✓	Minimal traffic on cross streets
Area Destinations (20 possible)	3	Grocery, worship, civic use, dance studio, warehouse, gas station	1	Not well lit. General low volume of traffic enables pleasant walk.
Walk Deficiencies (7 possible)	2	No bench, not well lit, not designed w/pedestrians in mind	4	

West Piedmont Complete Streets Coalition Henry County Walkability Assessments: Collinsville				
The following questions are in regards to sidewalks, paths or trails:	Virginia Ave (US 220 Bus.) Kings Mountain Rd to Daniels Creek Ave	Notes		
Sidewalks, paths or trails?	✓	4-5' wide sidewalks. Sidewalks located on E side of street		
Condition?	✓	Very good condition		
How safe do you feel?	✓			
Accommodate wheelchairs/strollers?	✓	There are curb cuts. Biggest issue is lack of continuity of sidewalks		
Continuous?	✗	Sidewalk on E side has 300' gap. Only 2 small segments on W end of st		
Width ≥ 5'?	✗	Yes and no. Older segments 4'		
Curb cuts?	✓	County recently installed/upgraded		
No obstructions?	✓			
Crosswalks/ signals?	✓	Only at intersection VA ave/Kings Mtn Rd		
Larger network?	✗			
Buffer?	✓	2' grass strip in most areas		
Sidewalk score (10 possible)	7			
Comfortable crossing street?	✓	Lack of crossing signals/crosswalks		
Area Destinations (20 possible)	8	Farmers market, supermarket, worship, bank, retail, parking, diner, post office		
Walk Deficiencies (7 possible)	3	Need more trees, no bench, not well lit. No street lights		



Henry County: Fieldale

Street segments with sidewalks, paths or trails on any or both sides of the street:	Sidewalk Rating (Out of 10)
Field Ave: Marshall Way to Fieldale Park Entrance/River Rd	1
Field Ave: Marshall Way (West) to Marshall Way (East)	2
Field Ave: 10th St to Marshall Way	1
Field Ave: Mill Dr to Marshall Way	4
Mill Drive: Marshall Way to rear of Fieldale Comm Ctr	0

West Piedmont Complete Streets Coalition Henry County Walkability Assessments: Fieldale				
The following questions are in regards to sidewalks, paths or trails:	Field Ave: Marshall Way to Fieldale Park Entrance/River Rd	Notes	Field Ave: Marshall Way (West) to Marshall Way (East)	
Sidewalks, paths or trails?	✓	Going up Fieldale Ave: sidewalk on R side from Fieldale Park. No sidewalk on park side of road	✓	Starting at post office towards Mill Dr, goes in front of Comm Ctr to Marshall Way/Field Ave.
Condition?	✗	Cracks up to telephone building at Patrick Ave. Sidewalk stops at telephone building	✗	Post office side in very good condition with handicap ramp. Approx. 4-5' wide
How safe do you feel?	✓	Fair. Have to watch as you walk	✗	Did not see anyone walking
Accommodate wheelchairs/strollers?	✗		✓	Good condition. Will accommodate wheelchairs, strollers, etc.
Continuous?	✗	Sidewalk on R side doesn't extend past telephone building	✓	Continues down hill to Field Ave. Becomes uneven, cracks, trip hazards
Width ≥ 5'?	✗	3'	✗	
Curb cuts?	✗	Only one is into parking area for telephone building		Only ones in front of post office and comm. ctr. School sidewalk 2' wide
No obstructions?	✗	Shrubs over sidewalk are trip hazards	✗	
Crosswalks/ signals?	✗		✗	
Larger network?	✗		✗	Some areas connects but poor cond.
Buffer?	✗			
Sidewalk score (10 possible)	1		2	
Comfortable crossing street?	✗	Lack of crossing signals/crosswalks. Curb ramps need repair, traffic fast		Lighting poor in evening. No crosswalks or signals in area.
Area Destinations (20 possible)	3	Worship, bank, parking lots, park/trailhead	5	Parking, comm ctr, post office, restaurants, small local businesses
Walk Deficiencies (7 possible)	7	All deficiencies checked	3	Uneven sidewalks, missing concrete, obstructions

Henry County: Fieldale

West Piedmont Complete Streets Coalition Henry County Walkability Assessments: Fieldale				
The following questions are in regards to sidewalks, paths or trails:	Field Ave: 10th St to Marshall Way	Notes	Field Ave: Mill Dr to Marshall Way	
Sidewalks, paths or trails?	✓	Corner of old elementary school, north towards 8th street	✓	Only on right side of road starting at corner of old service station.
Condition?	✗	Ends on R side at Brook St, very uneven, dropoff on side, mailboxes block walkway	✗	Poor. Cracks/uneven concrete. Portions of concrete missing.
How safe do you feel?	✗	Walkway does not appear to be used on regular basis	✗	Does not appear to be used on regular basis
Accommodate wheelchairs/strollers?	✗	Sidewalk narrow and uneven. No handicap slopes all the way up the hill	✓	Cracked in many areas and uneven
Continuous?	✗	Gaps in sidewalk and sidewalk only on one side of road	✓	Continues until meets Marshall Way
Width ≥ 5'?	✗		✓	
Curb cuts?	✓	Driveway and one other	✓	Driveway and one other
No obstructions?	✗	Light/utility poles, mailboxes, shrubs		Awning in stores may be an obstruction
Crosswalks/ signals?	✗		✗	
Larger network?	✗		✗	
Buffer?		Not in all areas. Some grass buffer	✗	Some area for parking cars
Sidewalk score (10 possible)	1		4	
Comfortable crossing street?		Lack of crossing signals/crosswalks, curb ramps needed/repair		No cross signals. No sidewalk on other side of road
Area Destinations (20 possible)	1	School	3	Parking, old garage, store fronts
Walk Deficiencies (7 possible)	5	not feel secure, not well maintained		Had to watch as you walked for uneven sidewalks, some obstructions

West Piedmont Complete Streets Coalition Henry County Walkability Assessments: Collinsville				
The following questions are in regards to sidewalks, paths or trails:	Mill Drive: Marshall Way to rear of Fieldale Comm Ctr	Notes		
Sidewalks, paths or trails?	✓	On right side of narrow road when you turn on Mill Ave at post office		
Condition?	✗	Cracks, uneven, grass growing		
How safe do you feel?	✗	Walkway is isolated, 30" wide		
Accommodate wheelchairs/strollers?	✗	Would have to be careful		
Continuous?	✗	Sidewalk stops on R side near end of road		
Width ≥ 5'?	✗	2.5'-30" wide		
Curb cuts?	✗	Only driveway entrance		
No obstructions?	✗	Light/utility poles in sidewalk on L side		
Crosswalks/ signals?	✗			
Larger network?	✗	Sidewalk circles Comm Ctr, fence blocking portion		
Buffer?				
Sidewalk score (10 possible)	0			
Comfortable crossing street?		Lack of crossing signals/crosswalks, curb ramps need repair		
Area Destinations (20 possible)	2	Comm ctr, parking		
Walk Deficiencies (7 possible)		Fair		

Henry County: Ridgeway

Street segments without sidewalks, paths or trails on any or both sides of the street:
<u>Almond Street</u> : Morehead Ave (US 87) to Magnolia St
<u>Morehead Ave (US 87)</u> : Main St (US 220 Bus.) to Vista View Ln

Street segments with sidewalks, paths or trails on any or both sides of the street:	Sidewalk Rating (Out of 10)
<u>Church Street (US 220 Bus.)</u> : Morehead Ave (US 87) to Greensboro Road (US Route 220)	7
<u>Main Street (US 220 Bus.)</u> : Morehead Ave (US 87) to Greensboro Rd (US Route 220)	8
<u>Magnolia Street</u> : Main St (US 220 Bus.) to Vista View Lane	4

West Piedmont Complete Streets Coalition Henry County Walkability Assessments: Ridgeway				
The following questions are in regards to sidewalks, paths or trails:	<u>Church Street (US 220 Bus.)</u> : Morehead Ave (US 87) to Greensboro Road (US Route 220)	Notes	<u>Main Street (US 220 Bus.)</u> : Morehead Ave (US 87) to Greensboro Rd (US Route 220)	Notes
Sidewalks, paths or trails?	✓	1 side of the street- zig zags. Stops abruptly around mulberry/church	✓	Sidewalk is on one side of the streets
Condition?	✗	Large gaps, cracks. Not ADA	✓	Very good
How safe do you feel?	✓	Bad at intersections (church/morehead) Unsafe after sidewalk stopped	✗	Very safe except when going over the bridge.
Accommodate wheelchairs/strollers?	✗	Cracks, no curb cuts	✓	
Continuous?	✗	Stops abruptly at mulberry	✓	Stops right after bridge
Width ≥ 5'?	✓		✓	
Curb cuts?	✗		✗	No curb cuts on side streets
No obstructions?	✓		✓	
Crosswalks/ signals?	✓	Moorehead/church no ped. lights	✗	Not needed
Larger network?	✓		✓	Connects to downtown Ridgeway
Buffer?	✓	Landscaping in some places	✓	
Sidewalk score (10 possible)	7		8	
Comfortable crossing street?	✓	No sidewalk in some places	✗	Road too wide, curb ramps need repair, traffic fast, no crosswalks
Area Destinations (20 possible)	4	Worship, Retail, Parking lots, Diner/restaurant	8	Grocery, laundromat, retail, diner, post office, library, park, civic use
Walk Deficiencies (7 possible)	2	Trash, no bench/resting place	1	No bench, trash cans

Henry County: Ridgeway

West Piedmont Complete Streets Coalition Henry County Walkability Assessments: Ridgeway				
The following questions are in regards to sidewalks, paths or trails:	Almond Street: Morehead Ave (US 87) to Magnolia St	Notes	Magnolia Street: Main St (US 220 Bus.) to Vista View Lane	Notes
Sidewalks, paths or trails?	✘	No sidewalks. Roads not travelled much and are wide	✓	Only on 1 side
Condition?	N/A		✓	
How safe do you feel?	N/A		✘	Felt safe only on the side with sidewalk
Accommodate wheelchairs/strollers?	N/A		✓	
Continuous?	N/A		✘	Stops at rescue squad to Magnolia/Vista View
Width ≥ 5'?	N/A		✓	
Curb cuts?	N/A		✘	Not at Almond/Magnolia
No obstructions?	N/A		✘	
Crosswalks/ signals?	N/A	No crosswalks from Almond across	✘	Not at Magnolia/Almond and Vista View/Magnolia
Larger network?	N/A		✘	
Buffer?	N/A		✓	Strip of grass
Sidewalk score (10 possible)	*		4	
Comfortable crossing street?	✘	Lack of crossing signals		Lack of crossing signals, curb ramps need repair, lack of crosswalks, parked cars
Area Destinations (20 possible)	5	Retail, post office, library, playground, rescue squad	3	Post office, library, fire station/EMS
Walk Deficiencies (7 possible)	1	No sidewalks	2	No bench/resting place, not well lit

West Piedmont Complete Streets Coalition Henry County Walkability Assessments: Ridgeway				
The following questions are in regards to sidewalks, paths or trails:	Morehead Ave (US 87): Main St (US 220 Bus.) to Vista View Ln	Notes		
Sidewalks, paths or trails?	✘	Stopped at Ridgeway Drive		
Condition?	✘	No buffers. Path is run-off		
How safe do you feel?	✘	Didn't want to walk. Dangerous!		
Accommodate wheelchairs/strollers?	✘	No path, no sidewalks		
Continuous?	✘			
Width ≥ 5'?	✘			
Curb cuts?	✘	No curb cuts		
No obstructions?	✓	Too narrow		
Crosswalks/ signals?	✘			
Larger network?	✓	Links library and dollar general		
Buffer?	✘	Need sidewalk system + buffer to start		
Sidewalk score (10 possible)	1			
Comfortable crossing street?	✓	Road too wide, lack of crossing signals/crosswalks, curb ramps need repair, traffic fast		
Area Destinations (20 possible)	7	Worship, retail, diner, post office, library, park, mayor's office		
Walk Deficiencies (7 possible)	4	No bench/resting place, not well lit, didn't feel secure, traffic too fast		

City of Martinsville



Henry County: City of Martinsville

Street segments without sidewalks, paths or trails on any or both sides of the street:
<u>Madison St/Randolph St/Church St Ext:</u> Madison St to Church St Ext @ Patrick Henry Ave
<u>Commonwealth Blvd:</u> Baymont Inn & Suites to Applebee's
<u>Fayette St:</u> Second St to shopping center @ intersection of Memorial & Fayette

Street segments with sidewalks, paths or trails on any or both sides of the street:	Sidewalk Rating (Out of 10)
<u>Brookdale St to Spruce St:</u> Sprucedale Dr to Prospect Hill Dr	7
<u>Cherry St/E. Church St:</u> Boden St to Brookdale St	8
<u>E Church St:</u> Bridge St to Clay St	9
<u>E Church St/Booker Rd/Church St Ext:</u> E Church St/Pat Henry Mall to Church St Ext at Bondurant St	2
<u>Commonwealth Blvd:</u> Grace Network to Hooker Field Rd	8
<u>Starling Ave/E Church St:</u> Piedmont Arts to Library on E Church St	4
<u>Ellsworth St:</u> West Main St to E Market St	10
<u>Broad St:</u> E Market St to E Church St	10
<u>Moss St:</u> E Church to Visitors' Center	4
<u>E Market St:</u> Ellsworth St to Broad St	8
<u>W Main St:</u> Visitors' Center to Ellsworth St	6
<u>E Church St:</u> Broad St to Moss St	9
<u>English St to Douglas Ave to Memorial Blvd to Starling Ave:</u> Graves St to Starling	7
<u>Fayette St/W Market St/ Village of Martinsville:</u> Fayette St to Commonwealth Blvd/Village of Martinsville	8
<u>E Church St:</u> Public Library to Silverbell Spur Trailhead	8
<u>W Main St:</u> Moss St to Franklin St/Liberty St	4
<u>Chatham Rd:</u> Hardee's to Commonwealth Blvd St	6
<u>E Church St:</u> W Market to Bridge St	8
<u>E Main St:</u> Bridge St to Clay St	8
<u>Fayette St:</u> W Market to High S	6

Henry County: Martinsville

West Piedmont Complete Streets Coalition Henry County Walkability Assessments: City of Martinsville				
The following questions are in regards to sidewalks, paths or trails:	Brookdale St to Spruce St: Sprucedale Dr to Prospect Hill Dr	Notes	Cherry St/E. Church St: Boden St to Brookdale St	Notes
Sidewalks, paths or trails?	✓		✓	
Condition?	✓	Cracks	✓	
How safe do you feel?	✓	not marked well to cross/speeding traffic	✓	
Accommodate wheelchairs/strollers?	✗		✓	Mostly - Cherry & Hooker no curb cuts
Continuous?	✓		✓	small gap at Church driveway
Width ≥ 5'?	✓	most of it	✓	
Curb cuts?	✗	not cut for wheelchair	✓	except Hooker & Cherry St
No obstructions?	✓		✓	
Crosswalks/ signals?	✗	none marked/no lights	✗	not working well
Larger network?	✓		✓	
Buffer?	✓	landscaping	✗	
Sidewalk score (10 possible)	7		8	
Comfortable crossing street?	✗	no x-ing signals/crosswalks, curb ramps broken, obstructions block traffic, fast traffic	✗	lack of x-walk/motorists do not yield to pedestrians
Area Destinations (20 possible)	8	conv. store, supermarket, bank, laundromat, retail, comm. center, restaurant, pharmacy	7	worship, bank, laundromat retail, parking lots, restaurant, pharmacy
Walk Deficiencies (7 possible)	0		1	no bench

West Piedmont Complete Streets Coalition Henry County Walkability Assessments: Martinsville				
The following questions are in regards to sidewalks, paths or trails:	E Church St: Bridge St to Clay St	Notes	E Church St/Booker Rd/Church St Ext: E Church St/Pat Henry Mall to Church St Ext at Bondurant St	Notes
Sidewalks, paths or trails?	✓		✓	Only present at Church St. Ext for 200 yds
Condition?	✓		✗	
How safe do you feel?	✓		✓	
Accommodate wheelchairs/strollers?	✓		✗	not wide enough
Continuous?	✓		✗	breaks or no sidewalk on one side
Width ≥ 5'?	✗	Wide enough for wheelchairs	✗	
Curb cuts?	✓		✗	
No obstructions?	✓		✗	
Crosswalks/ signals?	✓		✗	
Larger network?	✓		✓	close to mall & park
Buffer?	✗		✗	
Sidewalk score (10 possible)	9		2	
Comfortable crossing street?	✓		✗	no x-ing signals/crosswalks, need curb ramps, obstructions block traffic
Area Destinations (20 possible)	5	retail, parking lot, restaurant, entertainment, civic use	6	Retail, parking lots, restaurant, entertainment, fitness, park
Walk Deficiencies (7 possible)	0	pleasant	4	trees needed, trash, no bench, not maintained

Henry County: Martinsville

West Piedmont Complete Streets Coalition Henry County Walkability Assessments: City of Martinsville				
The following questions are in regards to sidewalks, paths or trails:	Commonwealth Blvd: Grace Network to Hooker Field Rd	Notes	Starling Ave/E Church St: Piedmont Arts to Library on E Church St	Notes
Sidewalks, paths or trails?	✓	one side	✓	from 204 to Cleveland Ave - no sidewalk on one side
Condition?	✓		✓	some cracks & breakage rom Mulberry to PAA, hedge in walk
How safe do you feel?	✓		✓	
Accommodate wheelchairs/ strollers?	✓			no answer
Continuous?	✓			no answer
Width ≥ 5'?	✓			no answer
Curb cuts?	✓			Mulberry & Starling ramp has tall bottom edge
No obstructions?	✓		✓	
Crosswalks/ signals?	✗			some
Larger network?	✓	Some areas they do connect	✓	
Buffer?		nothing marked	✗	
Sidewalk score (10 possible)	8		4	
Comfortable crossing street?	✗	Rd too wide	✓	
Area Destinations (20 possible)	3	Comm center, parking lot, entertainment, Dr. office	8	restaurant, entertainment, library, fitness center, park, offices, museum,
Walk Deficiencies (7 possible)	13	No bench/resting place	1	

West Piedmont Complete Streets Coalition Henry County Walkability Assessments: City of Martinsville				
The following questions are in regards to sidewalks, paths or trails:	Ellsworth St: West Main St to E Market St	Notes	Broad St: E Market St to E Church St	Notes
Sidewalks, paths or trails?	✓		✓	tree in walking space, cracks, narrow sidewalk
Condition?	✓		✓	
How safe do you feel?	✓		✓	
Accommodate wheelchairs/ strollers?	✓		✓	some of E Church St - yes, E Market - no
Continuous?	✓		✓	E. Church St -yes for half, E. Market - no
Width ≥ 5'?	✓		✓	E. Church St -yes for half, E. Market - no, 48 inches to grass
Curb cuts?	✓		✓	
No obstructions?	✓		✓	E Church St. - Yes for half, E. Market - no (on edge of sidewalk)
Crosswalks/ signals?	✓		✓	marked & flags
Larger network?	✓		✓	not on E Market - no signal or marked
Buffer?	✓		✓	landscaping
Sidewalk score (10 possible)	10		10	
Comfortable crossing street?	✓		✓	E Church St - yes, E Market - no, road to wide, no x-ing signals
Area Destinations (20 possible)	6	worship, retail, restaurant, entertainment, fitness center, college	5	retail, parking lot, restaurant, park, college
Walk Deficiencies (7 possible)	0	very pleasant	4	E Church - score 2, E Market - score 6

Henry County: Martinsville

West Piedmont Complete Streets Coalition Henry County Walkability Assessments: City of Martinsville				
The following questions are in regards to sidewalks, paths or trails:	Moss St: E Church to Visitors' Center	Notes	E Market St: Ellsworth St to Broad St	Notes
Sidewalks, paths or trails?	✓		✓	
Condition?	✓		✓	
How safe do you feel?	✓		✓	
Accommodate wheelchairs/ strollers?	✓		✓	
Continuous?	✓		✓	
Width ≥ 5'?	✗	but accessible	✗	4 ft for 100 yds, then 5 ft
Curb cuts?			✓	
No obstructions?			✓	
Crosswalks/ signals?			✓	
Larger network?			✓	
Buffer?			✗	
Sidewalk score (10 possible)	4		8	
Comfortable crossing street?			✓	
Area Destinations (20 possible)	6	worship, retail, restaurant, entertainment, fitness center, college	3	comm center, parking lots, restaurant
Walk Deficiencies (7 possible)	0	very pleasant	0	very pleasant

West Piedmont Complete Streets Coalition Henry County Walkability Assessments: City of Martinsville				
The following questions are in regards to sidewalks, paths or trails:	W Main St: Visitors' Center to Ellsworth St	Notes	E Church St: Broad St to Moss St	Notes
Sidewalks, paths or trails?	✓		✓	
Condition?		sidewalks sinking, unable to get around restaurant	✓	
How safe do you feel?	✓		✓	
Accommodate wheelchairs/ strollers?		not for half	✓	
Continuous?	✓		✓	
Width ≥ 5'?	✗			50 - 70 yds of parking lot
Curb cuts?	✓		✓	
No obstructions?	✗		✓	
Crosswalks/ signals?	✓		✓	missing signals
Larger network?	✓		✓	
Buffer?	✓	trees, landscaping, parked cars	✓	
Sidewalk score (10 possible)	6		9	
Comfortable crossing street?	✓	obstructions block traffic	✓	road too wide, no x-ing signals, no x-walk, lack of x-walk, no crossing sign
Area Destinations (20 possible)	2	restaurant, entertainment	3	Farmers' Market, supermarket,
Walk Deficiencies (7 possible)	0	nice	0	very nice

Henry County: Martinsville

West Piedmont Complete Streets Coalition Henry County Walkability Assessments: City of Martinsville				
The following questions are in regards to sidewalks, paths or trails:	<u>English St to Douglas Ave to Memorial Blvd to Starling Ave:</u> Graves St to Starling	Notes	<u>Fayette St/W Market St/ Village of Mville:</u> Fayette St to Commonwealth Blvd/Village of Mville	Notes
Sidewalks, paths or trails?	✓		✓	
Condition?	✓		✓	occasional manholes
How safe do you feel?	✗	sm buffer on Memorial Blvd, issue with sidewalks on Douglas	✓	
Accommodate wheelchairs/ strollers?	✓		✓	
Continuous?	✗	sidewalk stopped at museum storage on Douglas	✓	
Width ≥ 5'?	✓		✓	
Curb cuts?	✓		✗	no curb cuts at intersection of Market/Commonwealth & ??? St
No obstructions?	✓		✓	
Crosswalks/ signals?	✓	safe routes to school project	✗	Missing x-ing signals,
Larger network?	✗		✓	
Buffer?	✓	grass strip	✓	grass strip
Sidewalk score (10 possible)	7		8	
Comfortable crossing street?	✓			road too wide, no x-ing signals & x-walks, x-ing signals too short, curb ramps need repair
Area Destinations (20 possible)	6	worship, retail, parking lots, restaurant, post office, civic use	10	farmers' market, supermarket, worship, school, retail, parking lot, restaurant, pharmacy, employment center, civic use
Walk Deficiencies (7 possible)	3	more trees needed, no bench, traffic fast	4	need trees, no bench, trash present, not well lit

West Piedmont Complete Streets Coalition Henry County Walkability Assessments: City of Martinsville				
The following questions are in regards to sidewalks, paths or trails:	<u>E Church St: Public Library to Silverbell Spur Trailhead</u>	Notes	<u>Madison St/Randolph St/Church St Ext:</u> Madison St to Church St Ext @ Patrick Henry Ave	Notes
Sidewalks, paths or trails?	✓		✗	
Condition?	✓	some cracks	N/A	
How safe do you feel?	✓		N/A	
Accommodate wheelchairs/ strollers?		Yes for some areas and no for others with narrowed walkway due to shrubs, grade issues	N/A	
Continuous?	✓		N/A	
Width ≥ 5'?	✓	A person walking may have to move	N/A	
Curb cuts?	✓	Not all dotted or wide enough	N/A	
No obstructions?	✗	Sign straddling sidewalk	N/A	
Crosswalks/ signals?	✓		N/A	
Larger network?	✓		N/A	
Buffer?	✓	landscaping	N/A	
Sidewalk score (10 possible)	8		*	
Comfortable crossing street?		x-ing signal too fast, no x-walks, traffic fast	✗	curb ramps need repair-ing signal too fast, no x-walks
Area Destinations (20 possible)	5	worship, parking lots, library, fitness center, park	1	park
Walk Deficiencies (7 possible)	3	no bench, not well lit, not well maintained		Not good!

Henry County: Martinsville

West Piedmont Complete Streets Coalition Henry County Walkability Assessments: City of Martinsville				
The following questions are in regards to sidewalks, paths or trails:	W Main St; Moss St to Franklin St/Liberty St	Notes	Chatham Rd; Hardee's to Commonwealth Blvd St	Notes
Sidewalks, paths or trails?	✓	N Moss - No both sides of street until Townes, Townes 1/2 on each side, ended abruptly	✓	walk stops on one side
Condition?	✓	none on N Moss & no curb w/ x-walk	✓	
How safe do you feel?	✓	bad on N Moss	✓	
Accommodate wheelchairs/strollers?	✗	sparingly on N Moss, hilly	✓	
Continuous?	✗	stops @ N Moss/George St	✓	
Width ≥ 5'?	✓	Where there is sidewalk, yes		
Curb cuts?	✗	no curb cuts or cross walks	✗	none in many places
No obstructions?	✗	Sign straddling sidewalk	✓	
Crosswalks/ signals?	✗	After you leave Franklin no - mostly no	✗	
Larger network?	✓	uptown & uptown connection trail	✓	
Buffer?	✗			
Sidewalk score (10 possible)	4		6	
Comfortable crossing street?	✗	road too wide, no x-ing signals/x-walks, curb ramps need repair, traffic too fast		
Area Destinations (20 possible)	6	bank, retail, parking lots, entertainment, park, college	6	retail, parking lots, restaurant, entertainment, worship, ball park
Walk Deficiencies (7 possible)	4	no bench, did not feel secure, not well maintained, traffic too fast	1	No benches

West Piedmont Complete Streets Coalition Henry County Walkability Assessments: City of Martinsville				
The following questions are in regards to sidewalks, paths or trails:	Commonwealth Blvd; Baymont Inn & Suites to Applebee's	Notes	E Church St; W Market to Bridge St	Notes
Sidewalks, paths or trails?	✗		✓	
Condition?	N/A		✓	some cracks/not major
How safe do you feel?	N/A		✓	
Accommodate wheelchairs/strollers?	N/A		✓	
Continuous?	N/A		✓	
Width ≥ 5'?	N/A		✗	mostly, but smaller in a few places with poles or cans
Curb cuts?	N/A		✓	
No obstructions?	N/A		✗	poles & trees
Crosswalks/ signals?	N/A		✓	
Larger network?	N/A		✓	
Buffer?	N/A		✓	landscaping
Sidewalk score (10 possible)	*		8	
Comfortable crossing street?	✗	road too wide, no x-ing signals or x-walks, x-ing signals went quickly, curb ramps need repair, fast traffic,	✓	
Area Destinations (20 possible)	6	supermarket, retail, parking lots, restaurant, pharmacy, civic use	6	worship, retail, parking lot, restaurant, fitness center, college/school
Walk Deficiencies (7 possible)	6	no bench, did not feel secure, trash, not well maintained, traffic fast, more trees needed	0	pleasant

Henry County: Martinsville

West Piedmont Complete Streets Coalition				
Henry County Walkability Assessments: City of Martinsville				
The following questions are in regards to sidewalks, paths or trails:	E Main St: Bridge St to Clay St	Notes	Fayette St: W Market to High St	Notes
Sidewalks, paths or trails?	✓		✓	sidewalk stops at Dunlap on right
Condition?	✓		✓	
How safe do you feel?	✓	sidewalk sinking	✓	
Accommodate wheelchairs/ strollers?	✓		✗	
Continuous?	✓		✓	
Width ≥ 5'?	✗	for the most part	✗	
Curb cuts?	✓		✓	
No obstructions?	✓		✗	trees
Crosswalks/ signals?	✓	by farmers' market need better markings	✗	
Larger network?			✓	
Buffer?	✓		✓	parked cars
Sidewalk score (10 possible)	8		6	
Comfortable crossing street?		sidewalk by Visitors' Center	✓	
Area Destinations (20 possible)	5	retail, parking lots, restaurant, entertainment, civic use	4	small grocery, farmers' market, retail, restaurant
Walk Deficiencies (7 possible)	0	comfortable	1	Did not feel personal secure/bad neighborhood

West Piedmont Complete Streets Coalition				
Henry County Walkability Assessments: City of Martinsville				
The following questions are in regards to sidewalks, paths or trails:	Fayette St: Second St to shopping center @ intersection of Memorial & Fayette	Notes		
Sidewalks, paths or trails?	✗			
Condition?	N/A			
How safe do you feel?	N/A			
Accommodate wheelchairs/ strollers?	N/A			
Continuous?	N/A			
Width ≥ 5'?	N/A			
Curb cuts?	N/A			
No obstructions?	N/A			
Crosswalks/ signals?	N/A			
Larger network?	N/A			
Buffer?	N/A			
Sidewalk score (10 possible)	*			
Comfortable crossing street?				
Area Destinations (20 possible)	3	small grocery, retail, parking lots		
Walk Deficiencies (7 possible)				

City of Martinsville: Martinsville Loop

Street segments with sidewalks, paths or trails on any or both sides of the street:	Sidewalk Rating (Out of 10)
West Main St: Martinsville Visitors Center to Ellsworth St	10
Ellsworth St: West Main St to East Market St	8
East Market St: Ellsworth St to Broad St	6
Broad St: East Market St to East Church St	8
East Church St: Broad St to Moss St	8
Moss St: East Church St to Visitors Center	7
West Main St: Moss St to Franklin St/Liberty St behind Courthouse	10

Martinsville Loop

West Piedmont Complete Streets Coalition City of Martinsville Walkability Assessments: Martinsville Loop				
The following questions are in regards to sidewalks, paths or trails:	West Main St: Martinsville Visitors Center to Ellsworth St	Notes	Ellsworth St: West Main St to East Market St	
Sidewalks, paths or trails?	✓		✓	
Condition?	✓	Small cracks only	✓	Small cracks @ Church + Ells
How safe do you feel?	✓		✓	
Accommodate wheelchairs/strollers?	✓		✓	
Continuous?	✓		✓	
Width ≥ 5'?	✓		✓	Mostly: narrows to 4' near Market St
Curb cuts?	✓	No bump/landing pads	✓	
No obstructions?	✓			Mostly: Utility box @ Church+Ells
Crosswalks/ signals?	✓	Pedestrian signs in road, only signal @ Walnut + Main	✓	Signals @ Church, Market
Larger network?	✓		✓	
Buffer?	✓	Some: trees, parked cars	✗	
Sidewalk score (10 possible)	10		8	
Comfortable crossing street?	✓		✓	Crossing signals didn't provide enough time
Area Destinations (20 possible)	10	retail, parking, diner, entertainment, park, college, workforce	8	Grocery, worship, bank, comm ctr, school, retail, parking, entertainment
Walk Deficiencies (7 possible)				

West Piedmont Complete Streets Coalition City of Martinsville Walkability Assessments: Martinsville Loop				
The following questions are in regards to sidewalks, paths or trails:	East Market St: Ellsworth St to Broad St	Notes	Broad St: East Market St to East Church St	
Sidewalks, paths or trails?	✓		✓	
Condition?	✓	Some minor cracks	✓	Cracks around simply the best
How safe do you feel?	✓		✓	
Accommodate wheelchairs/strollers?	✓		✓	
Continuous?	✗	Gap near wigs	✓	
Width ≥ 5'?	✓	Just barely 5'- some might be under	✓	
Curb cuts?	✓		✓	
No obstructions?	✗	Shrubs near Ells south side of st @ Ells+Signals, none @ Maple and Broad	✗	Sign and pole b/t TR + Church
Crosswalks/ signals?	✓		✓	None @ Market St
Larger network?	✗		✓	
Buffer?	✗		✗	
Sidewalk score (10 possible)	6		8	
Comfortable crossing street?	✓	Lack of crossing signals/crosswalks, turning traffic at Wheeler Ave	✓	Lack of crossing signals/crosswalks
Area Destinations (20 possible)	7	Grocery, worship, bank, school, retail, parking, civic	7	Worship, comm ctr, retail, parking, diner, entertainment, park
Walk Deficiencies (7 possible)	3	More trees needed, trash present, no bench	2	No bench, not well maintained

Martinsville Loop

West Piedmont Complete Streets Coalition City of Martinsville Walkability Assessments: Martinsville Loop				
The following questions are in regards to sidewalks, paths or trails:	East Church St: Broad St to Moss St	Notes	Moss St: East Church St to Visitors Center	Notes
Sidewalks, paths or trails?	✓		✓	
Condition?	✓	Uneven @ Bridge St	✓	
How safe do you feel?	✓		✓	
Accommodate wheelchairs/strollers?	✓	Some cracks/gaps- minor <2"	✓	
Continuous?	✗	Minor gaps near Broad. Across from City Hall-sidewalk briefly stops and gives way to asphalt	✓	
Width ≥ 5'?	✓		✗	East side has lots of util. poles in the way
Curb cuts?	✓	No rumble strips	✓	Good
No obstructions?	✗	Mostly clear	✗	Poles, fire hydrant
Crosswalks/ signals?	✓		✓	Good, well marked, ramps
Larger network?	✓		✓	
Buffer?	✓	Trees, parked car	✗	
Sidewalk score (10 possible)	8		7	
Comfortable crossing street?	✓		✓	
Area Destinations (20 possible)	12	Farmers market, worship, bank, comm ctr, retail, parking, diner, entertainment, fitness, workforce, civic	5	Farmers market, comm ctr, parking, college, civic
Walk Deficiencies (7 possible)				

Patrick County



Patrick County: Stuart

Street segments without sidewalks, paths or trails on any or both sides of the street:	
Staples Avenue: Park St. to Mayo Court	
Wood Brothers Drive: N Main St. to Blue Ridge St.	

Street segments with sidewalks, paths or trails on any or both sides of the street:	Sidewalk Rating (Out of 10)
Buena Vista Ave: Park St. to Dobbins Rd.	3
Buena Vista Ave: Wood Brothers Dr. to Park St.	6
Mayo Court: Staples Ave. to Riverside Dr.	8
North Main Street: E. Blue Ridge St. to S. Main St./ Wood Brothers Dr.	9
Park Street: Staples Ave. to Buena Vista Ave.	6
Staples Avenue: Park St. to W. Blue Ridge St.	5
West Blue Ridge St: Staples Ave. to Wood Brothers Drive	7
West Blue Ridge St: Wood Bro. Dr. to N. Main St.	7
Wood Brothers Drive: W Blue Ridge to DHCC	9

Patrick County: Stuart

West Piedmont Complete Streets Coalition Patrick County Walkability Assessments: Stuart				
The following questions are in regards to sidewalks, paths or trails:	Buena Vista Ave: Park St. to Dobbins Rd.	Notes	Buena Vista Ave: Wood Brothers Dr. to Park St.	Notes
Sidewalks, paths or trails?	✓	one side but not entire length	✓	one side
Condition?	✗	no curb cuts, shrubs in the way	✗	gravel driveways, no curb cuts
How safe do you feel?	✓		✓	
Accommodate wheelchairs/ strollers?	✗	no curb cuts	✓	with difficulty
Continuous?	✓	one area crosses gravel driveway	✗	25 ft gap between segments
Width ≥ 5'?	✗	4 ft	✓	
Curb cuts?	✗		✗	
No obstructions?	✗	shrubs in the way	✓	
Crosswalks/ signals?	✗		✗	
Larger network?	✓		✓	
Buffer?	✗		✓	grass in some areas
Sidewalk score (10 possible)	3		6	
Comfortable crossing street?	✓		✓	
Area Destinations (20 possible)		none checked		none checked
Walk Deficiencies (7 possible)		lights present	2	more trees, no benches

Patrick County: Stuart

West Piedmont Complete Streets Coalition Patrick County Walkability Assessments: Stuart				
The following questions are in regards to sidewalks, paths or trails:	Mayo Court: Staples Ave. to Riverside Dr.	Notes	North Main Street: E. Blue Ridge St. to S. Main St./ Wood Brothers Dr.	Notes
Sidewalks, paths or trails?	✓	one side of street	✓	one both sides till lower segment
Condition?	✓	weeds growing through cracks	✓	
How safe do you feel?	✓		✓	
Accommodate wheelchairs/ strollers?	✓	hill is impediment	✓	streets lights and trash as obstacles
Continuous?	✓	end short of Dobbin Rd and Staples St	✓	
Width ≥ 5'?	✗	4 ft	✓	lower end 4ft
Curb cuts?	✗	no cross streets	✓	curb cuts missing in some areas
No obstructions?	✓		✗	street furniture obstructs
Crosswalks/ signals?	✓	one at school	✓	
Larger network?	✓	not connected to sidewalks in town	✓	
Buffer?	✓	2 ft grass strip	✓	parked cars
Sidewalk score (10 possible)	8		9	
Comfortable crossing street?	✓		✓	curb ramps need repair
Area Destinations (20 possible)	2		4	barber shop, real estate office
Walk Deficiencies (7 possible)	1	lights on other side of sidewalk		slow traffic, flowers present, street lights

West Piedmont Complete Streets Coalition Patrick County Walkability Assessments: Stuart				
The following questions are in regards to sidewalks, paths or trails:	Park Street: Staples Ave. to Buena Vista Ave.	Notes	Staples Avenue: Park St. to Mayo Court	Notes
Sidewalks, paths or trails?	✓	one side of street	✗	
Condition?	✗	old, cracked, narrow in one section	N/A	
How safe do you feel?	✓		N/A	
Accommodate wheelchairs/ strollers?	✗	no curb cuts	N/A	
Continuous?	✓		N/A	
Width ≥ 5'?	✗	one section 2 ft wide	N/A	
Curb cuts?	✗		N/A	
No obstructions?	✓		N/A	
Crosswalks/ signals?	✓	one crosswalk	N/A	
Larger network?	✓		N/A	
Buffer?	✓	grass	N/A	
Sidewalk score (10 possible)	6		*	
Comfortable crossing street?	✓		✓	
Area Destinations (20 possible)	1		1	
Walk Deficiencies (7 possible)	1	lights present	1	sharp curve at Staple prohibits view

Patrick County: Stuart

West Piedmont Complete Streets Coalition Patrick County Walkability Assessments: Stuart				
The following questions are in regards to sidewalks, paths or trails:	Staples Avenue: Park St. to W. Blue Ridge St.	Notes	West Blue Ridge St: Staples Ave. to Wood Brothers Drive	Notes
	Sidewalks, paths or trails?		✓	
Condition?	✗	overgrown with grass	✓	some cracking and narrow
How safe do you feel?	✓		✓	
Accommodate wheelchairs/ strollers?	✗	no curb cuts and not continuous	✓	narrow
Continuous?	✗		✗	20-25 ft gap at east end
Width ≥ 5'?	✗		✗	4 ft mostly
Curb cuts?	✗		✓	small lip
No obstructions?	✓		✗	utility pole
Crosswalks/ signals?	✓		✓	
Larger network?	✓		✓	
Buffer?	✓	grass	✓	3 ft shoulder
Sidewalk score (10 possible)	5		7	
Comfortable crossing street?	✓		✓	
Area Destinations (20 possible)	1		1	funeral home
Walk Deficiencies (7 possible)	2	side walk not well kept	3	

West Piedmont Complete Streets Coalition Patrick County Walkability Assessments: Stuart				
The following questions are in regards to sidewalks, paths or trails:	West Blue Ridge St: Wood Bro. Dr. to N. Main St.	Notes	Wood Brothers Drive: N Main St. to Blue Ridge St.	Notes
	Sidewalks, paths or trails?		✓	
Condition?	✗	large cracks and crumbling areas	n/a	
How safe do you feel?	✓		n/a	
Accommodate wheelchairs/ strollers?	✓	cracks, lacks of curb cuts, east end is elevated with steps	n/a	
Continuous?	✓		n/a	
Width ≥ 5'?	✓		n/a	
Curb cuts?	✗	utility pole	n/a	
No obstructions?	✗	utility pole	n/a	
Crosswalks/ signals?	✓		n/a	
Larger network?	✓		n/a	
Buffer?	✓	3-4 ft shoulder	n/a	
Sidewalk score (10 possible)	7		*	
Comfortable crossing street?	✓			
Area Destinations (20 possible)	4	motel, probation office		
Walk Deficiencies (7 possible)	2	lights present		

Patrick County: Stuart

West Piedmont Complete Streets Coalition Patrick County Walkability Assessments: Stuart				
The following questions are in regards to sidewalks, paths or trails:	Wood Brothers Drive:	Notes		
	W Blue Ridge to DHCC			
Sidewalks, paths or trails?	✓	on eastside only		
Condition?	✓			
How safe do you feel?	✓			
Accommodate wheelchairs/strollers?	✓			
Continuous?	✓			
Width ≥ 5'?	✗	4 ft		
Curb cuts?	✓			
No obstructions?	✓			
Crosswalks/ signals?	✓			
Larger network?	✓			
Buffer?	✓	2 ft grass strip		
Sidewalk score (10 possible)	9			
Comfortable crossing street?	✓			
Area Destinations (20 possible)	2			
Walk Deficiencies (7 possible)	2			



Patrick County: Stuart Loop

Street segments with sidewalks, paths or trails on any or both sides of the street:	Sidewalk Rating (Out of 10)
Commerce Street: Patrick Ave to Mayo River Trail Parking Lot	5
Patrick Avenue: Commerce St to end of block (at intersection of South Main St.)	7
South Main St: Patrick Ave (crossover) to North Main St.	9
Chesnut: E. Blue Ridge to Patrick Ave	5
E. Blue Ridge St: Chesnut Ave to N. Main St.	5
N. Main: E. Blue Ridge to S. Main/ Wood Bro Dr.	4

Patrick County: Stuart Loop

West Piedmont Complete Streets Coalition Patrick County Walkability Assessments: Stuart Loop				
The following questions are in regards to sidewalks, paths or trails:	Commerce Street: Patrick Ave to Mayo River Trail Parking Lot	Notes	Patrick Avenue: Commerce St to end of block (at intersection of South Main St.)	Notes
	Sidewalks, paths or trails?		✓	
Condition?	✓	no curb cuts	✓	
How safe do you feel?	✓		✓	
Accommodate wheelchairs/strollers?	✗	no curb cuts	✓	
Continuous?	✓		✗	
Width ≥ 5'?	✗		✓	one side not as wide
Curb cuts?	✗		✓	curb cuts not in all areas
No obstructions?	✓		✗	light pole in the way, raised stoop
Crosswalks/ signals?	✗		✗	no crosswalks
Larger network?	✓		✓	
Buffer?	✗		✓	wider shoulder, parked cars
Sidewalk score (10 possible)	5		7	
Comfortable crossing street?	✓	no crosswalks	✗	lack of crosswalks, and fast traffic
Area Destinations (20 possible)	2		3	real estate and law office
Walk Deficiencies (7 possible)			1	more trees needed

West Piedmont Complete Streets Coalition Patrick County Walkability Assessments: Stuart Loop				
The following questions are in regards to sidewalks, paths or trails:	South Main St: Patrick Ave (crossover) to North Main St.	Notes	Chesnut: E. Blue Ridge to Patrick Ave	Notes
Sidewalks, paths or trails?	✓	alternates from one side to other	✓	alternates from one side to other
Condition?	✓		✗	no curb cuts, weeds on sidewalk, and narrow, poles in way
How safe do you feel?	✓	pedestrian must cross main st multiple times	✓	
Accommodate wheelchairs/ strollers?	✓		✓	with great difficulty, steep hills
Continuous?	✓		✓	
Width ≥ 5'?	✗	4 ft	✓	4- 5 ft
Curb cuts?	✓		✗	
No obstructions?	✓		✗	gravel driveways, utility poles, mailboxes in way
Crosswalks/ signals?	✓	fading	✗	
Larger network?	✓		✓	
Buffer?	✓	2 ft grass strip	✗	
Sidewalk score (10 possible)	9		5	
Comfortable crossing street?	✗	traffic moving fast	✓	curb ramps needed
Area Destinations (20 possible)		none checked		none checked
Walk Deficiencies (7 possible)	2	more trees and no benches	3	more trees, no bench, not maintained

Patrick County: Stuart Loop

West Piedmont Complete Streets Coalition Patrick County Walkability Assessments: Stuart Loop				
The following questions are in regards to sidewalks, paths or trails:	E. Blue Ridge St: Chesnut Ave to N. Main St.	Notes	N. Main: E. Blue Ridge to S. Main/ Wood Bro Dr.	Notes
Sidewalks, paths or trails?	✓	alternates from one side to other	✓	sidewalks on both sides for most of segment
Condition?	✗	cracks and no curb cuts	✓	
How safe do you feel?	✓	crossing patrick ave felt unsafe	✓	
Accommodate wheelchairs/ strollers?	✓	with great difficulty bc of poor condition	✓	some obstructions: trash receptacles
Continuous?	✓	yes but must cross st to switch sides	✓	
Width ≥ 5'?	✓		✓	except lower end is 4ft
Curb cuts?	✗		✓	curb cuts missing in some areas
No obstructions?	✗	utility poles and overgrown shrubs	✗	street lights and benches obstruct sidewalk
Crosswalks/ signals?	✓	only at N Main St	✓	
Larger network?	✓		✓	
Buffer?		not answered	✓	parked cars
Sidewalk score (10 possible)	6		9	
Comfortable crossing street?	✗	road is too wide, lack of crosswalks and signals	✓	curb ramps needed
Area Destinations (20 possible)	5	car wash and gas station	4	barber shop and real estate office
Walk Deficiencies (7 possible)	2	more trees and no benches		traffic moves slow and landscaping is nice with st lights

Walkability Checklist

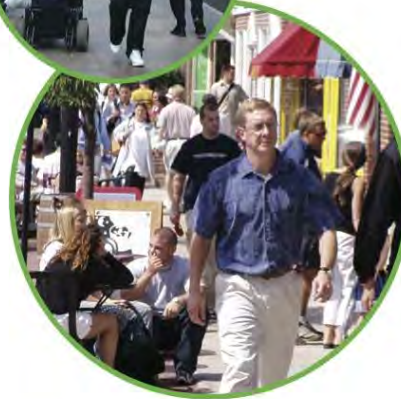
How walkable is your community?

Take a walk with a child and decide for yourselves.

Everyone benefits from walking. These benefits include: improved fitness, cleaner air, reduced risks of certain health problems, and a greater sense of community. But walking needs to be safe and easy. Take a walk with your child and use this checklist to decide if your neighborhood is a friendly place to walk. Take heart if you find problems, there are ways you can make things better.

Getting started:

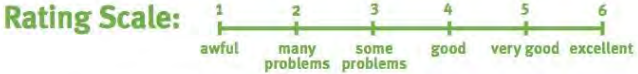
First, you'll need to pick a place to walk, like the route to school, a friend's house or just somewhere fun to go. The second step involves the checklist. Read over the checklist before you go, and as you walk, note the locations of things you would like to change. At the end of your walk, give each question a rating. Then add up the numbers to see how you rated your walk overall. After you've rated your walk and identified any problem areas, the next step is to figure out what you can do to improve your community's score. You'll find both immediate answers and long-term solutions under "Improving Your Community's Score..." on the third page.



Take a walk and use this checklist to rate your neighborhood's walkability.

How walkable is your community?

Location of walk



1. Did you have room to walk?

- Yes Some problems:
- Sidewalks or paths started and stopped
 - Sidewalks were broken or cracked
 - Sidewalks were blocked with poles, signs, shrubbery, dumpsters, etc.
 - No sidewalks, paths, or shoulders
 - Too much traffic
 - Something else _____

Rating: (circle one) **Locations of problems:**
 1 2 3 4 5 6 _____

**4. Was it easy to follow safety rules?
 Could you and your child...**

- Yes No Cross at crosswalks or where you could see and be seen by drivers?
- Yes No Stop and look left, right and then left again before crossing streets?
- Yes No Walk on sidewalks or shoulders facing traffic where there were no sidewalks?
- Yes No Cross with the light?

Rating: (circle one) **Locations of problems:**
 1 2 3 4 5 6 _____

2. Was it easy to cross streets?

- Yes Some problems:
- Road was too wide
 - Traffic signals made us wait too long or did not give us enough time to cross
 - Needed striped crosswalks or traffic signals
 - Parked cars blocked our view of traffic
 - Trees or plants blocked our view of traffic
 - Needed curb ramps or ramps needed repair
 - Something else _____

Rating: (circle one) **Locations of problems:**
 1 2 3 4 5 6 _____

5. Was your walk pleasant?

- Yes Some problems:
- Needed more grass, flowers, or trees
 - Scary dogs
 - Scary people
 - Not well lighted
 - Dirty, lots of litter or trash
 - Dirty air due to automobile exhaust
 - Something else _____

Rating: (circle one) **Locations of problems:**
 1 2 3 4 5 6 _____

3. Did drivers behave well?

- Yes Some problems: Drivers ...
- Backed out of driveways without looking
 - Did not yield to people crossing the street
 - Turned into people crossing the street
 - Drove too fast
 - Sped up to make it through traffic lights or drove through traffic lights?
 - Something else _____

Rating: (circle one) **Locations of problems:**
 1 2 3 4 5 6 _____

**How does your neighborhood stack up?
 Add up your ratings and decide.**

- 1. _____ **26-30** Celebrate! You have a great neighborhood for walking.
 - 2. _____ **21-25** Celebrate a little. Your neighborhood is pretty good.
 - 3. _____ **16-20** Okay, but it needs work.
 - 4. _____ **11-15** It needs lots of work. You deserve better than that.
 - 5. _____ **5-10** It's a disaster for walking!
- Total:** _____

**Now that you've identified the problems,
 go to the next page to find out how to fix them.**

Now that you know the problems, you can find the answers.

Improving your community's score

1. Did you have room to walk?	What you and your child can do immediately	What you and your community can do with more time
Sidewalks or paths started and stopped Sidewalks broken or cracked Sidewalks blocked No sidewalks, paths or shoulders Too much traffic	<ul style="list-style-type: none">• pick another route for now• tell local traffic engineering or public works department about specific problems and provide a copy of the checklist	<ul style="list-style-type: none">• speak up at board meetings• write or petition city for walkways and gather neighborhood signatures• make media aware of problem• work with a local transportation engineer to develop a plan for a safe walking route
2. Was it easy to cross streets?	<ul style="list-style-type: none">• pick another route for now• share problems and checklist with local traffic engineering or public works department• trim your trees or bushes that block the street and ask your neighbors to do the same• leave nice notes on problem cars asking owners not to park there	<ul style="list-style-type: none">• push for crosswalks/signals/ parking changes/curb ramps at city meetings• report to traffic engineer where parked cars are safety hazards• report illegally parked cars to the police• request that the public works department trim trees or plants• make media aware of problem
3. Did drivers behave well?	<ul style="list-style-type: none">• pick another route for now• set an example: slow down and be considerate of others• encourage your neighbors to do the same• report unsafe driving to the police	<ul style="list-style-type: none">• petition for more enforcement• request protected turns• ask city planners and traffic engineers for traffic calming ideas• ask schools about getting crossing guards at key locations• organize a neighborhood speed watch program
4. Could you follow safety rules?	<ul style="list-style-type: none">• educate yourself and your child about safe walking• organize parents in your neighborhood to walk children to school	<ul style="list-style-type: none">• encourage schools to teach walking safely• help schools start safe walking programs• encourage corporate support for flex schedules so parents can walk children to school
5. Was your walk pleasant?	<ul style="list-style-type: none">• point out areas to avoid to your child; agree on safe routes• ask neighbors to keep dogs leashed or fenced• report scary dogs to the animal control department• report scary people to the police• report lighting needs to the police or appropriate public works department• take a walk with a trash bag• plant trees, flowers in your yard• select alternative route with less traffic	<ul style="list-style-type: none">• request increased police enforcement• start a crime watch program in your neighborhood• organize a community clean-up day• sponsor a neighborhood beautification or tree-planting day• begin an adopt-a-street program• initiate support to provide routes with less traffic to schools in your community (reduced traffic during am and pm school commute times)
A Quick Health Check	<ul style="list-style-type: none">• start with short walks and work up to 30 minutes of walking most days• invite a friend or child along• walk along shaded routes where possible• use sunscreen of SPF 15 or higher, wear a hat and sunglasses• try not to walk during the hottest time of day	<ul style="list-style-type: none">• get media to do a story about the health benefits of walking• call parks and recreation department about community walks• encourage corporate support for employee walking programs• plant shade trees along routes• have a sun safety seminar for kids• have kids learn about unhealthy ozone days and the Air Quality Index (AQI)

Need some guidance? These resources might help...

Great Resources

WALKING INFORMATION

Pedestrian and Bicycle Information Center (PBIC)

UNC Highway Safety Research Center
Chapel Hill, NC
www.pedbikeinfo.org
www.walkinginfo.org

National Center for Safe Routes to School

Chapel Hill, NC
www.saferoutesinfo.org

For More Information about Who Can Help Address Community Problems

www.walkinginfo.org/problems/help.cfm

State Bicycle & Pedestrian Coordinators

<http://www.walkinginfo.org/assistance/contacts.cfm>

FEDERAL POLICY, GUIDANCE AND FUNDING SOURCES FOR WALKING FACILITIES

Federal Highway Administration

Bicycle and Pedestrian Program
Office of Natural and Human Environment
Washington, DC
www.fhwa.dot.gov/environment/bikeped/index.htm

PEDESTRIAN SAFETY

Federal Highway Administration

Pedestrian and Bicycle Safety Team
Office Of Safety
Washington, DC
http://safety.fhwa.dot.gov/ped_bike/

National Highway Traffic Safety Administration

Traffic Safety Programs
Washington, DC
www.nhtsa.dot.gov/people/injury/pedbimot/pedSAFE

SIDEWALK ACCESSIBILITY INFORMATION

US Access Board

Washington, DC
Phone: (800) 872-2253;
(800) 993-2822 (TTY)
www.access-board.gov

