

Franklin County Virginia

Total and Per Farm Overview, 2017 and change since 2012

	2017	% change since 2012
Number of farms	1,019	(Z)
Land in farms (acres)	156,254	-5
Average size of farm (acres)	153	-5
Total (\$)		
Market value of products sold	69,199,000	+6
Government payments	705,000	-35
Farm-related income	3,708,000	+27
Total farm production expenses	64,185,000	+12
Net cash farm income	9,427,000	-24
Per farm average (\$)		
Market value of products sold	67,909	+6
Government payments (average per farm receiving)	8,592	+45
Farm-related income	9,995	+6
Total farm production expenses	62,988	+13
Net cash farm income	9,251	-24

2 Percent of state agriculture sales

Share of Sales by Type (%)

Crops	25
Livestock, poultry, and products	75

Land in Farms by Use (%) ^a

Cropland	47
Pastureland	22
Woodland	27
Other	5

Acres irrigated: 441

(Z)% of land in farms

Land Use Practices (% of farms)

No till	15
Reduced till	3
Intensive till	4
Cover crop	13

Farms by Value of Sales

	Number	Percent of Total ^a
Less than \$2,500	357	35
\$2,500 to \$4,999	133	13
\$5,000 to \$9,999	143	14
\$10,000 to \$24,999	150	15
\$25,000 to \$49,999	80	8
\$50,000 to \$99,999	48	5
\$100,000 or more	108	11

Farms by Size

	Number	Percent of Total ^a
1 to 9 acres	87	9
10 to 49 acres	270	26
50 to 179 acres	420	41
180 to 499 acres	184	18
500 to 999 acres	41	4
1,000 + acres	17	2

Market Value of Agricultural Products Sold

	Sales (\$1,000)	Rank in State ^b	Counties Producing Item	Rank in U.S. ^b	Counties Producing Item
Total	69,199	11	98	1,489	3,077
Crops	17,041	27	97	1,751	3,073
Grains, oilseeds, dry beans, dry peas	7,358	28	96	1,491	2,916
Tobacco	4,953	7	25	78	323
Cotton and cottonseed	-	-	11	-	647
Vegetables, melons, potatoes, sweet potatoes	612	29	97	899	2,821
Fruits, tree nuts, berries	(D)	28	95	(D)	2,748
Nursery, greenhouse, floriculture, sod	679	43	93	959	2,601
Cultivated Christmas trees, short rotation woody crops	(D)	38	58	(D)	1,384
Other crops and hay	3,090	14	97	827	3,040
Livestock, poultry, and products	52,158	9	98	917	3,073
Poultry and eggs	106	39	97	1,034	3,007
Cattle and calves	12,878	19	97	1,082	3,055
Milk from cows	38,766	2	59	206	1,892
Hogs and pigs	(D)	27	89	978	2,856
Sheep, goats, wool, mohair, milk	78	37	94	1,455	2,984
Horses, ponies, mules, burros, donkeys	203	26	94	952	2,970
Aquaculture	-	-	49	-	1,251
Other animals and animal products	(D)	22	93	(D)	2,878

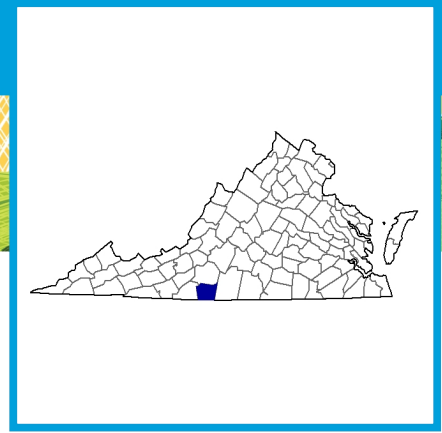
Total Producers ^c	1,676	Percent of farms that:	Top Crops in Acres ^d	
Sex		Have internet access	67	
Male	1,090			
Female	586			
Age		Farm organically	(Z)	
<35	178			
35 – 64	1,021			
65 and older	477			
Race		Sell directly to consumers	7	
American Indian/Alaska Native	15			
Asian	4			
Black or African American	39			
Native Hawaiian/Pacific Islander	-			
White	1,612	Hire farm labor	21	
More than one race	6			
Other characteristics		Are family farms	98	
Hispanic, Latino, Spanish origin	17			
With military service	195			
New and beginning farmers	476			
			Livestock Inventory (Dec 31, 2017)	
			Broilers and other meat-type chickens	430
			Cattle and calves	46,975
			Goats	1,403
			Hogs and pigs	272
			Horses and ponies	665
			Layers	3,438
			Pullets	1,006
			Sheep and lambs	364
			Turkeys	23

See 2017 Census of Agriculture, U.S. Summary and State Data, for complete footnotes, explanations, definitions, commodity descriptions, and methodology.

^a May not add to 100% due to rounding. ^b Among counties whose rank can be displayed. ^c Data collected for a maximum of four producers per farm.

^d Crop commodity names may be shortened; see full names at www.nass.usda.gov/go/cropnames.pdf. ^e Position below the line does not indicate rank.

(D) Withheld to avoid disclosing data for individual operations. (NA) Not available. (Z) Less than half of the unit shown. (-) Represents zero.



Henry County Virginia

Total and Per Farm Overview, 2017 and change since 2012

	2017	% change since 2012
Number of farms	212	-27
Land in farms (acres)	45,527	+6
Average size of farm (acres)	215	+45
Total (\$)		
Market value of products sold	14,124,000	(D)
Government payments	34,000	-81
Farm-related income	668,000	+54
Total farm production expenses	10,526,000	-3
Net cash farm income	4,299,000	+22
Per farm average (\$)		
Market value of products sold	66,622	(D)
Government payments (average per farm receiving)	3,052	-34
Farm-related income	11,321	+88
Total farm production expenses	49,653	+33
Net cash farm income	20,278	+67

(Z) Percent of state agriculture sales

Share of Sales by Type (%)

Crops	16
Livestock, poultry, and products	84

Land in Farms by Use (%) ^a

Cropland	26
Pastureland	29
Woodland	42
Other	3

Acres irrigated: 43

(Z)% of land in farms

Land Use Practices (% of farms)

No till	10
Reduced till	3
Intensive till	11
Cover crop	12

Farms by Value of Sales

	Number	Percent of Total ^a
Less than \$2,500	83	39
\$2,500 to \$4,999	28	13
\$5,000 to \$9,999	30	14
\$10,000 to \$24,999	34	16
\$25,000 to \$49,999	19	9
\$50,000 to \$99,999	6	3
\$100,000 or more	12	6

Farms by Size

	Number	Percent of Total ^a
1 to 9 acres	19	9
10 to 49 acres	45	21
50 to 179 acres	90	42
180 to 499 acres	40	19
500 to 999 acres	6	3
1,000 + acres	12	6

Market Value of Agricultural Products Sold

	Sales (\$1,000)	Rank in State ^b	Counties Producing Item	Rank in U.S. ^b	Counties Producing Item
Total	14,124	63	98	2,544	3,077
Crops	2,270	80	97	2,647	3,073
Grains, oilseeds, dry beans, dry peas	91	89	96	2,455	2,916
Tobacco	854	13	25	169	323
Cotton and cottonseed	-	-	11	-	647
Vegetables, melons, potatoes, sweet potatoes	83	68	97	1,610	2,821
Fruits, tree nuts, berries	112	51	95	1,255	2,748
Nursery, greenhouse, floriculture, sod	47	73	93	1,515	2,601
Cultivated Christmas trees, short rotation woody crops	-	-	58	-	1,384
Other crops and hay	1,083	54	97	1,801	3,040
Livestock, poultry, and products	11,853	40	98	2,001	3,073
Poultry and eggs	9	78	97	1,801	3,007
Cattle and calves	(D)	(D)	97	(D)	3,055
Milk from cows	-	-	59	-	1,892
Hogs and pigs	(D)	77	89	(D)	2,856
Sheep, goats, wool, mohair, milk	35	59	94	1,947	2,984
Horses, ponies, mules, burros, donkeys	9	72	94	2,314	2,970
Aquaculture	(D)	3	49	37	1,251
Other animals and animal products	6	57	93	1,580	2,878

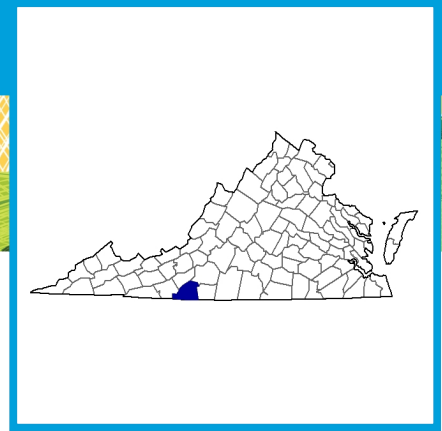
Total Producers ^c	333	Percent of farms that:	Top Crops in Acres ^d
Sex		Have internet access	Forage (hay/haylage), all 8,296
Male	218	73	Wheat for grain, all 247
Female	115		Tobacco 190
Age		Farm organically	Soybeans for beans (D)
<35	25	2	Vegetables harvested, all 22
35 – 64	174		
65 and older	134		
Race		Sell directly to consumers	Livestock Inventory (Dec 31, 2017)
American Indian/Alaska Native	-	6	Broilers and other meat-type chickens -
Asian	-		Cattle and calves 5,775
Black or African American	16	Hire farm labor	Goats 349
Native Hawaiian/Pacific Islander	-	22	Hogs and pigs 30
White	315		Horses and ponies 183
More than one race	2	Are family farms	Layers 568
Other characteristics		97	Pullets 41
Hispanic, Latino, Spanish origin	5		Sheep and lambs 242
With military service	38		Turkeys 17
New and beginning farmers	90		

See 2017 Census of Agriculture, U.S. Summary and State Data, for complete footnotes, explanations, definitions, commodity descriptions, and methodology.

^a May not add to 100% due to rounding. ^b Among counties whose rank can be displayed. ^c Data collected for a maximum of four producers per farm.

^d Crop commodity names may be shortened; see full names at www.nass.usda.gov/go/cropnames.pdf. ^e Position below the line does not indicate rank.

(D) Withheld to avoid disclosing data for individual operations. (NA) Not available. (Z) Less than half of the unit shown. (-) Represents zero.



Patrick County Virginia

Total and Per Farm Overview, 2017 and change since 2012

	2017	% change since 2012
Number of farms	483	-15
Land in farms (acres)	91,252	+15
Average size of farm (acres)	189	+35
Total (\$)		
Market value of products sold	17,273,000	+5
Government payments	260,000	-53
Farm-related income	1,154,000	+12
Total farm production expenses	16,530,000	-9
Net cash farm income	2,157,000	+18075
Per farm average (\$)		
Market value of products sold	35,762	+23
Government payments (average per farm receiving)	4,255	-15
Farm-related income	9,015	+51
Total farm production expenses	34,223	+7
Net cash farm income	4,466	+21164

(Z) Percent of state agriculture sales

Share of Sales by Type (%)

Crops	42
Livestock, poultry, and products	58

Land in Farms by Use (%) ^a

Cropland	24
Pastureland	18
Woodland	53
Other	5

Acres irrigated: 213

(Z)% of land in farms

Land Use Practices (% of farms)

No till	5
Reduced till	6
Intensive till	8
Cover crop	6

Farms by Value of Sales

	Number	Percent of Total ^a
Less than \$2,500	188	39
\$2,500 to \$4,999	45	9
\$5,000 to \$9,999	72	15
\$10,000 to \$24,999	82	17
\$25,000 to \$49,999	53	11
\$50,000 to \$99,999	25	5
\$100,000 or more	18	4

Farms by Size

	Number	Percent of Total ^a
1 to 9 acres	25	5
10 to 49 acres	161	33
50 to 179 acres	206	43
180 to 499 acres	72	15
500 to 999 acres	10	2
1,000 + acres	9	2

Market Value of Agricultural Products Sold

	Sales (\$1,000)	Rank in State ^b	Counties Producing Item	Rank in U.S. ^b	Counties Producing Item
Total	17,273	54	98	2,457	3,077
Crops	7,338	50	97	2,183	3,073
Grains, oilseeds, dry beans, dry peas	1,018	67	96	2,115	2,916
Tobacco	1,033	12	25	159	323
Cotton and cottonseed	-	-	11	-	647
Vegetables, melons, potatoes, sweet potatoes	696	25	97	856	2,821
Fruits, tree nuts, berries	737	15	95	551	2,748
Nursery, greenhouse, floriculture, sod	1,873	29	93	661	2,601
Cultivated Christmas trees, short rotation woody crops	26	32	58	454	1,384
Other crops and hay	1,954	30	97	1,236	3,040
Livestock, poultry, and products	9,935	45	98	2,114	3,073
Poultry and eggs	19	67	97	1,595	3,007
Cattle and calves	3,829	44	97	1,856	3,055
Milk from cows	(D)	19	59	(D)	1,892
Hogs and pigs	16	45	89	1,436	2,856
Sheep, goats, wool, mohair, milk	(D)	(D)	94	(D)	2,984
Horses, ponies, mules, burros, donkeys	11	70	94	2,289	2,970
Aquaculture	(D)	7	49	(D)	1,251
Other animals and animal products	30	29	93	1,179	2,878

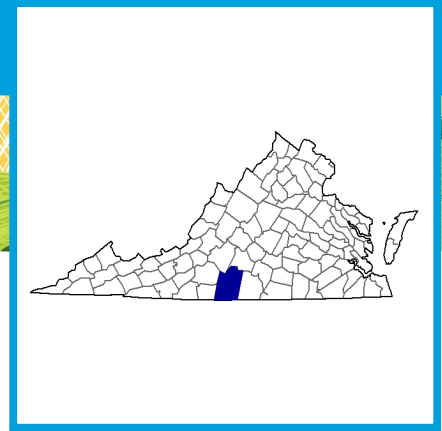
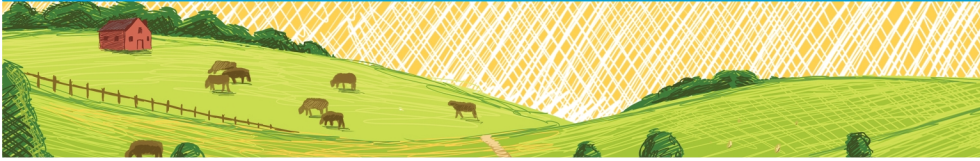
Total Producers ^c	782	Percent of farms that:	Top Crops in Acres ^d
Sex		Have internet access	Forage (hay/haylage), all 13,764
Male	513		Corn for silage or greenchop (D)
Female	269	73	Corn for grain 749
Age		Farm organically	Wheat for grain, all 371
<35	44		Nursery stock crops (D)
35 – 64	411	-	
65 and older	327		
Race		Sell directly to consumers	Livestock Inventory (Dec 31, 2017)
American Indian/Alaska Native	-		Broilers and other meat-type chickens 272
Asian	-		Cattle and calves 13,113
Black or African American	9	Hire farm labor	Goats 156
Native Hawaiian/Pacific Islander	-		Hogs and pigs 137
White	762	27	Horses and ponies 368
More than one race	11		Layers 1,496
Other characteristics		Are family farms	Pullets -
Hispanic, Latino, Spanish origin	10		Sheep and lambs 561
With military service	106	96	Turkeys -
New and beginning farmers	188		

See 2017 Census of Agriculture, U.S. Summary and State Data, for complete footnotes, explanations, definitions, commodity descriptions, and methodology.

^a May not add to 100% due to rounding. ^b Among counties whose rank can be displayed. ^c Data collected for a maximum of four producers per farm.

^d Crop commodity names may be shortened; see full names at www.nass.usda.gov/go/cropnames.pdf. ^e Position below the line does not indicate rank.

(D) Withheld to avoid disclosing data for individual operations. (NA) Not available. (Z) Less than half of the unit shown. (-) Represents zero.



Pittsylvania County Virginia

Total and Per Farm Overview, 2017 and change since 2012

	2017	% change since 2012
Number of farms	1,157	-15
Land in farms (acres)	246,322	-14
Average size of farm (acres)	213	(Z)
Total	(\$)	
Market value of products sold	72,678,000	-16
Government payments	1,441,000	-63
Farm-related income	8,714,000	+81
Total farm production expenses	67,727,000	-13
Net cash farm income	15,105,000	-16
Per farm average	(\$)	
Market value of products sold	62,816	-2
Government payments (average per farm receiving)	7,239	-9
Farm-related income	17,783	+112
Total farm production expenses	58,537	+2
Net cash farm income	13,056	-2

2 Percent of state agriculture sales

Share of Sales by Type (%)

Crops	41
Livestock, poultry, and products	59

Land in Farms by Use (%) ^a

Cropland	34
Pastureland	26
Woodland	36
Other	5

Acres irrigated: 1,492

1% of land in farms

Land Use Practices (% of farms)

No till	9
Reduced till	4
Intensive till	11
Cover crop	10

Farms by Value of Sales

	Number	Percent of Total ^a
Less than \$2,500	434	38
\$2,500 to \$4,999	120	10
\$5,000 to \$9,999	175	15
\$10,000 to \$24,999	204	18
\$25,000 to \$49,999	95	8
\$50,000 to \$99,999	44	4
\$100,000 or more	85	7

Farms by Size

	Number	Percent of Total ^a
1 to 9 acres	63	5
10 to 49 acres	286	25
50 to 179 acres	429	37
180 to 499 acres	279	24
500 to 999 acres	66	6
1,000 + acres	34	3

Market Value of Agricultural Products Sold

	Sales (\$1,000)	Rank in State ^b	Counties Producing Item	Rank in U.S. ^b	Counties Producing Item
Total	72,678	10	98	1,435	3,077
Crops	29,897	14	97	1,416	3,073
Grains, oilseeds, dry beans, dry peas	3,979	39	96	1,722	2,916
Tobacco	20,400	2	25	21	323
Cotton and cottonseed	-	-	11	-	647
Vegetables, melons, potatoes, sweet potatoes	370	37	97	1,062	2,821
Fruits, tree nuts, berries	309	32	95	831	2,748
Nursery, greenhouse, floriculture, sod	1,002	37	93	854	2,601
Cultivated Christmas trees, short rotation woody crops	-	-	58	-	1,384
Other crops and hay	3,837	10	97	667	3,040
Livestock, poultry, and products	42,781	11	98	1,058	3,073
Poultry and eggs	2,494	20	97	682	3,007
Cattle and calves	16,781	11	97	918	3,055
Milk from cows	22,657	4	59	301	1,892
Hogs and pigs	(D)	12	89	(D)	2,856
Sheep, goats, wool, mohair, milk	101	28	94	1,289	2,984
Horses, ponies, mules, burros, donkeys	72	44	94	1,611	2,970
Aquaculture	(D)	29	49	(D)	1,251
Other animals and animal products	111	10	93	715	2,878

Total Producers ^c	1,811	Percent of farms that:	Top Crops in Acres ^d
Sex		Have internet access	Forage (hay/haylage), all 43,885
Male	1,244	68	Wheat for grain, all 6,023
Female	567		Soybeans for beans 5,353
Age		Farm organically	Tobacco 4,942
<35	109	1	Corn for silage or greenchop 4,477
35 – 64	961		
65 and older	741		
Race		Sell directly to consumers	Livestock Inventory (Dec 31, 2017)
American Indian/Alaska Native	2	6	Broilers and other meat-type chickens 111
Asian	4		Cattle and calves 52,680
Black or African American	68	Hire farm labor	Goats 1,186
Native Hawaiian/Pacific Islander	1	26	Hogs and pigs (D)
White	1,728		Horses and ponies 1,453
More than one race	8	Are family farms	Layers 42,306
Other characteristics		98	Pullets 46,108
Hispanic, Latino, Spanish origin	8		Sheep and lambs 476
With military service	249		Turkeys 189
New and beginning farmers	370		

See 2017 Census of Agriculture, U.S. Summary and State Data, for complete footnotes, explanations, definitions, commodity descriptions, and methodology.

^a May not add to 100% due to rounding. ^b Among counties whose rank can be displayed. ^c Data collected for a maximum of four producers per farm.

^d Crop commodity names may be shortened; see full names at www.nass.usda.gov/go/cropnames.pdf. ^e Position below the line does not indicate rank.

(D) Withheld to avoid disclosing data for individual operations. (NA) Not available. (Z) Less than half of the unit shown. (-) Represents zero.